

Texas Water Trends - Addendum

Lopez, A., R. Lopez, M. Crawford, A. Smith, D. Barrientos, B. Wegner-Hicks, O. Muñoz, A. Roberts, V. Puig-Williams, and D. Mueller.

List of Figures

- [Figure 1. Change in water demand from 2020 to 2050 and Communities-At-Risk by county in Texas. Source: 2022 State Water Plan, Texas Water Development Board \(TWDB\). \(Report Figure 32\)](#)
- [Figure 2. Predicted water needs in 2050 and Communities-At-Risk by county in Texas. Source: 2022 State Water Plan, Texas Water Development Board \(TWDB\). \(Report Figure 33\)](#)
- [Figure 3. Percentage of wells with decreasing water levels sampled from 2000–2014 and Communities-at-Risk by county in Texas. Source: 2022 State Water Plan, Texas Water Development Board \(TWDB\). \(Report Figure 35\)](#)
- [Figure 4. General density of water wells and Communities-At-Risk in Texas. Source: Submitted Drillers Report Groundwater Database, Texas Water Development Board \(TWDB\). \(Report Figure 36\)](#)
- [Figure 5. Drinking water violations of public water suppliers and Communities-At-Risk in Texas. Source: Environmental Protection Agency \(EPA\) Safe Drinking Water Information System \(SDWIS\). \(Report Figure 37\)](#)
- [Figure 6. Groundwater contamination sites and local aquifers and Communities-At-Risk in Texas. Source: Texas Commission on Environmental Quality \(TCEQ\). \(Report Figure 38\)](#)
- [Figure 7. Potential groundwater quality hazards and local aquifers and Communities-at-Risk in Texas. Source: Texas Commission on Environmental Quality \(TCEQ\). \(Report Figure 39\)](#)
- [Figure 8. Impaired streams and Communities-at-Risk in Texas. Source: Texas Commission on Environmental Quality \(TCEQ\). \(Report Figure 40\)](#)
- [Figure 9. Facilities with excessive effluent exceedances and Communities-At-Risk in Texas. Source: Texas Commission on Environmental Quality \(TCEQ\). \(Report Figure 41\)](#)
- [Figure 10. Water bill burden levels for public water systems and Communities-At-Risk in Texas. Source: The Nicholas Institute for Environmental Policy Solutions. \(Report Figure 42\)](#)
- [Figure 11. Flood hazard index and Communities-At-Risk by county in Texas. Sources: Natural Resources Conservation Service \(NRCS\), National Oceanic and Atmospheric Administration \(NOAA\). \(Report Figure 43\)](#)
- [Figure 12. Relative flood risk in Texas using flash flood warnings from 1986-2018 and Communities-At-Risk by county and 100-year flood event risk zones. Source: Texas Water Development Board \(TWDB\). \(Report Figure 44\)](#)
- [Figure 13. Recreational water access in Texas, including publicly accessible land, boat ramps, and bridges and Communities-At-Risk. Source: Texas Parks and Wildlife Department \(TPWD\), Texas Department of Public Transportation \(TXDOT\). \(Report Figure 45\)](#)
- [Figure 14. Communities At-Risk in Texas. Source: U.S. Census Bureau, Environmental Protection Agency \(EPA\) EJSCREEN. \(Report Figure 46\)](#)
- [Figure 15. Water Equityscape combining Communities At-Risk and water challenges in Texas. Source: Compiled by NRI from Texas Commission on Environmental Quality \(TCEQ\), Texas Water Development Board \(TWDB\), The Nicholas Institute, Environmental Protection Agency \(EPA\), U.S. Census Bureau. \(Report Figure 48\)](#)
- [Figure 16. Groundwater Conservation Districts and budget ranges in Texas. Source: Texas Alliance of Groundwater Districts. \(not on report\)](#)
- [Figure 17. Texas Freedom Colonies and Communities-at-Risk. Source: Data provided by Texas Freedom Colonies and compiled by NRI from the Texas Freedom Colonies Project, The Office of the Attorney General, Texas Commission on Environmental Quality \(TCEQ\), Texas Water Development Board \(TWDB\), The Nicholas Institute, Environmental Protection Agency \(EPA\). \(not on report\).](#)
- [Figure 18. Texas Colonias and Communities-at-Risk. Source: Compiled by NRI from the Texas Freedom Colonies Project, The Office of the Attorney General, The Nicholas Institute, Environmental Protection Agency \(EPA\). \(not on report\).](#)
- [Figure 19. Texas Colonias, Colonias and Aquifer level trends over time \(2000-present\). Source: Compiled by NRI from the Texas Freedom Colonies Project, Texas Water Development Board \(TWDB\), The Nature Conservancy, The Office of the Attorney General. \(not on report\).](#)
- [Figure 20. Texas Freedom Colonies and water challenges. Source: Compiles by NRI from the Texas Freedom Colonies Project, Texas Water Development Board \(TWDB\), The Nature Conservancy, The Office of the Attorney General. \(not on report\).](#)

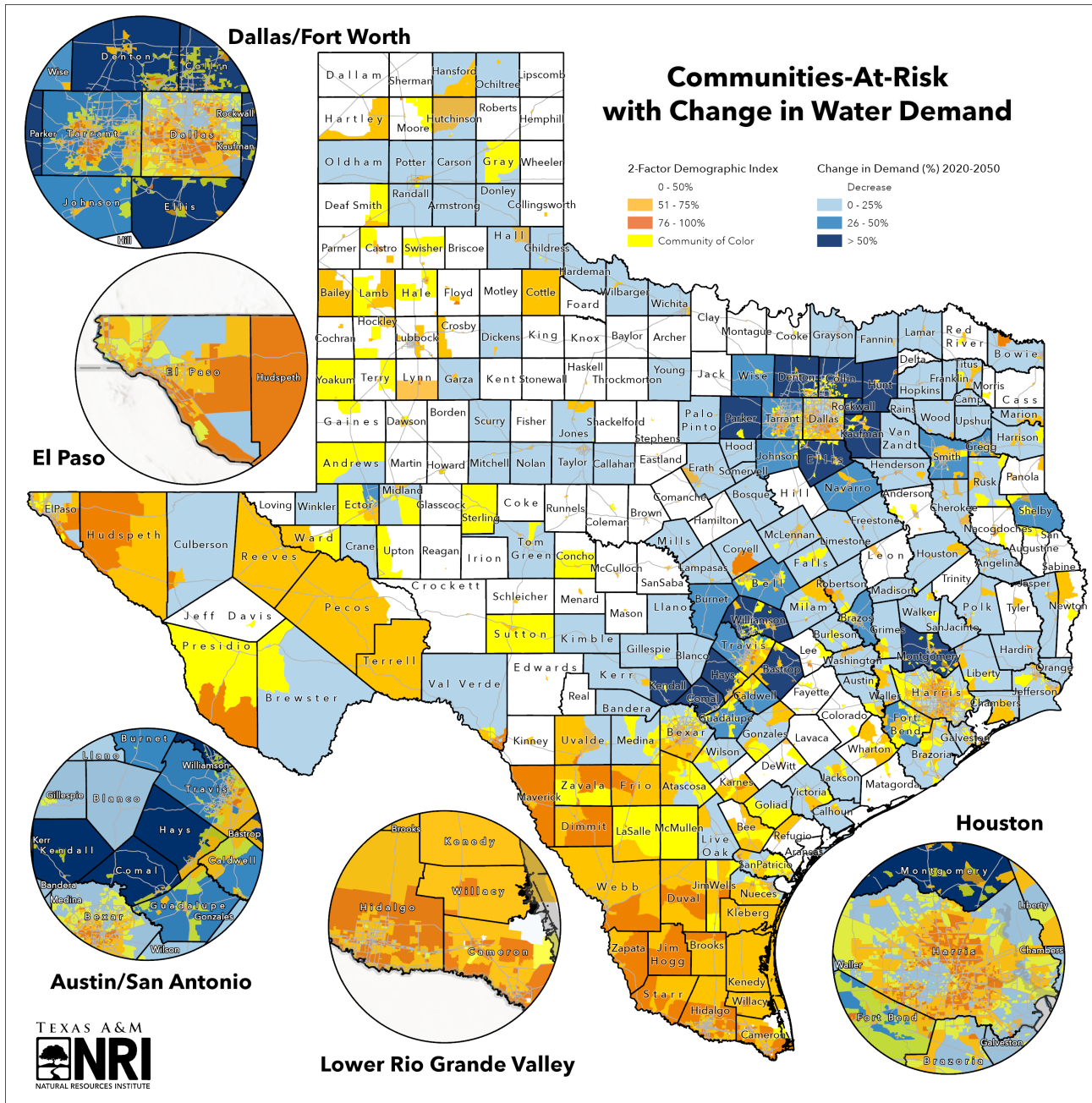


Figure 1. Change in water demand from 2020 to 2050 and Communities-At-Risk by county in Texas. Source: 2022 State Water Plan, Texas Water Development Board (TWDB). (Report Figure 32)

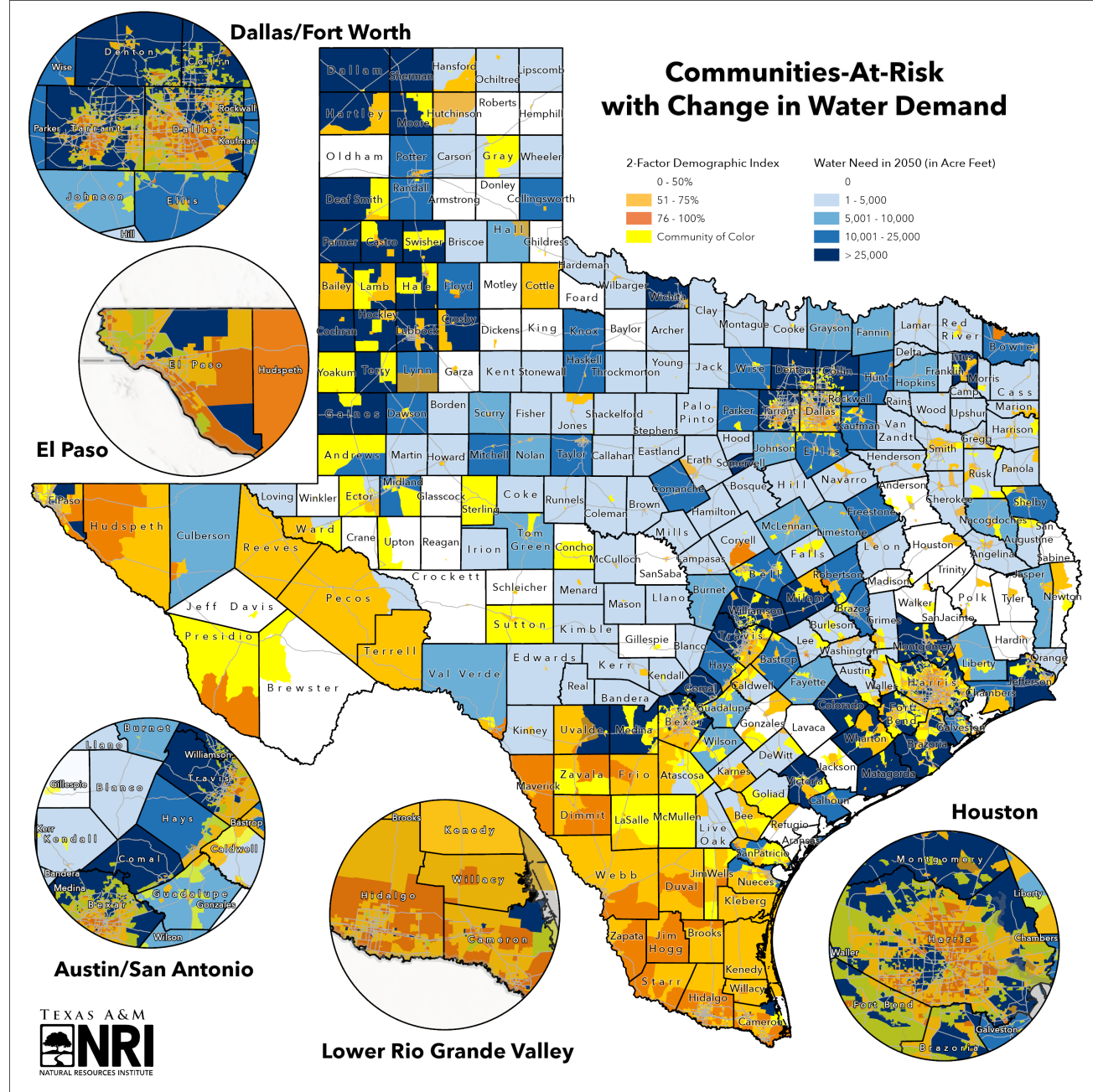


Figure 2. Predicted water needs in 2050 and Communities-At-Risk by county in Texas. Source: 2022 State Water Plan, Texas Water Development Board (TWDB). (Report Figure 33)

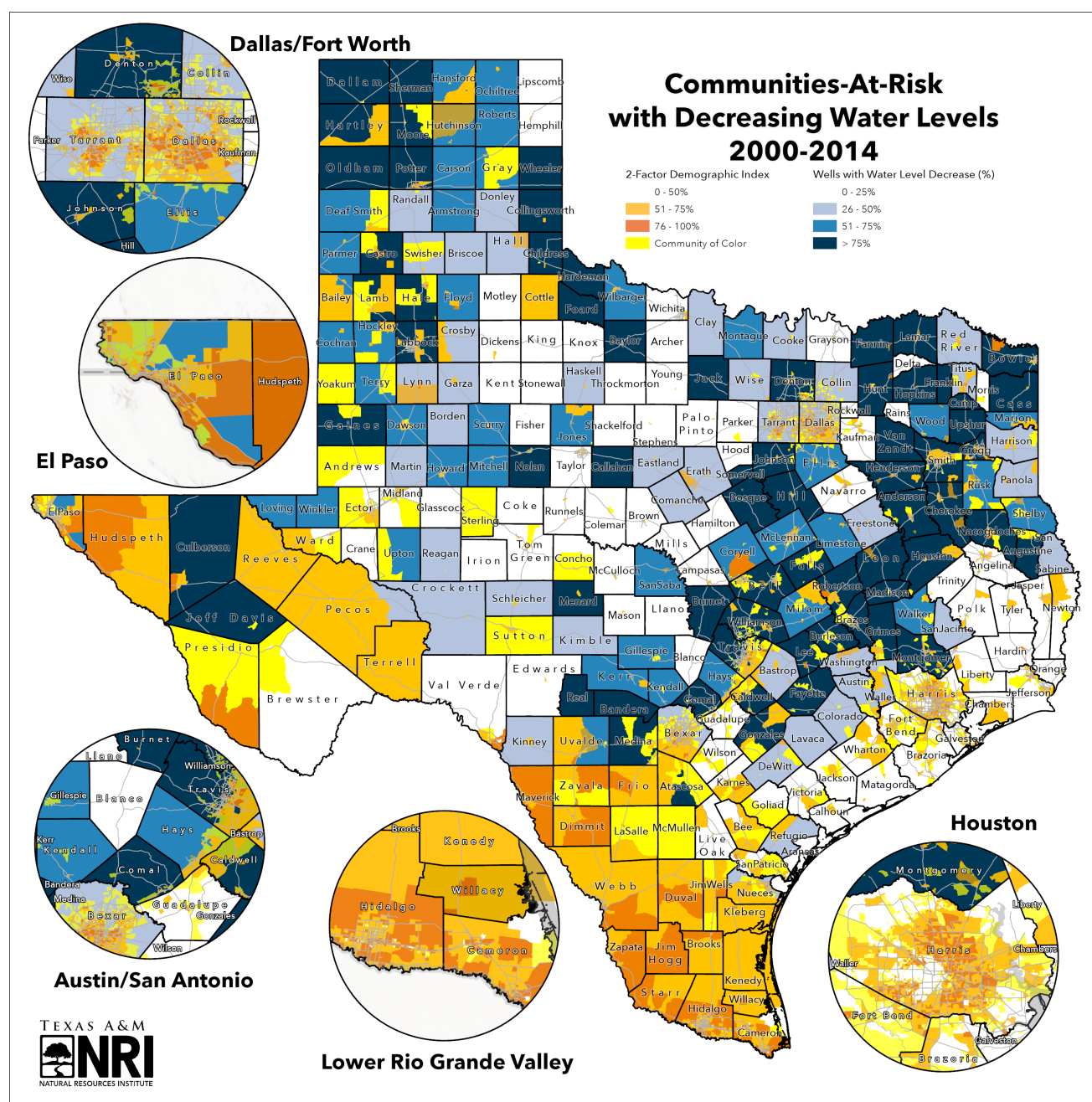


Figure 3. Percentage of wells with decreasing water levels sampled from 2000–2014 and Communities-at-Risk by county in Texas. Source: 2022 State Water Plan, Texas Water Development Board (TWDB). (Report Figure 35)

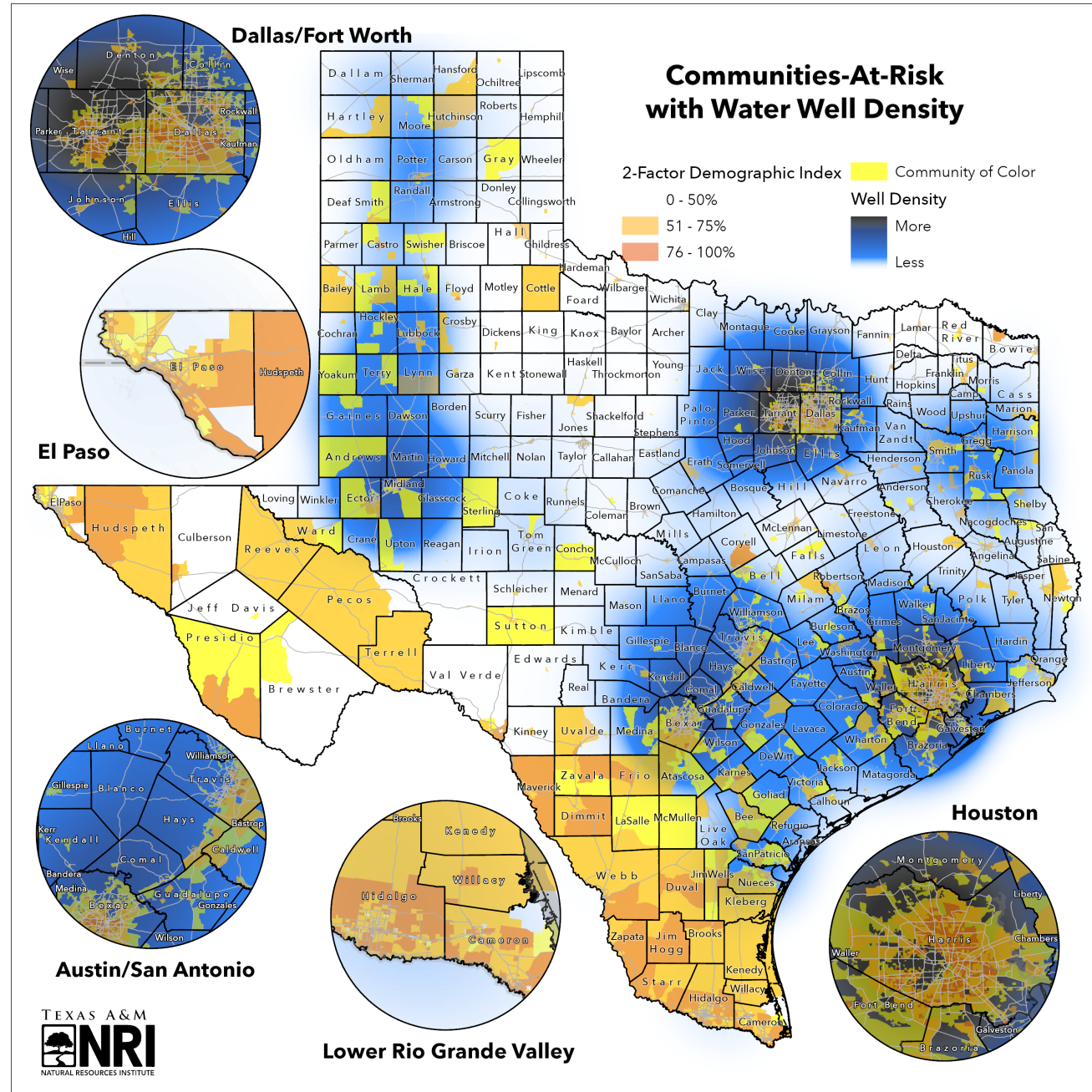


Figure 4. General density of water wells and Communities-At-Risk in Texas. Source: Submitted Drillers Report Groundwater Database, Texas Water Development Board (TWDB). (Report Figure 36)

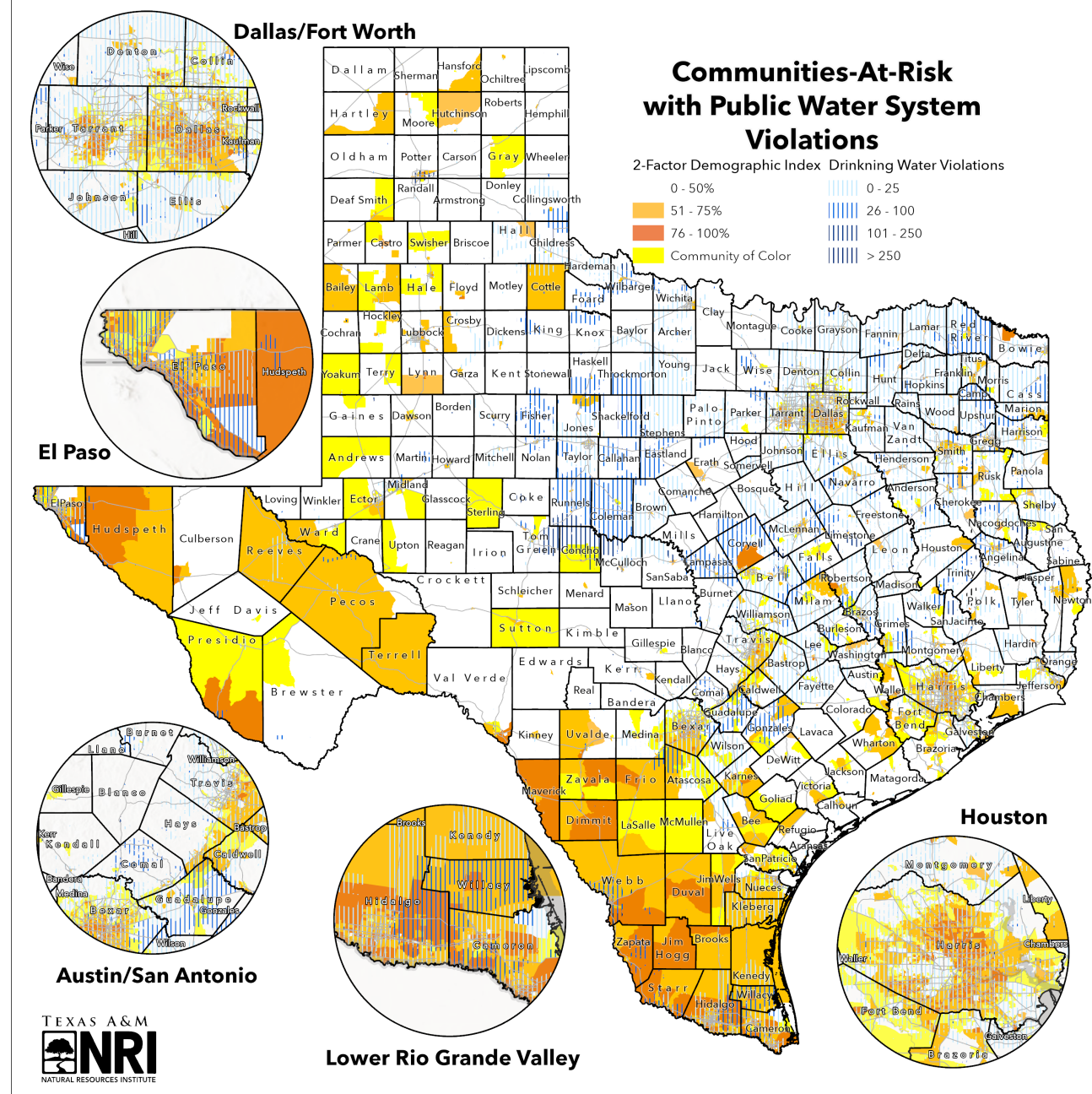


Figure 5. Drinking water violations of public water suppliers and Communities-At-Risk in Texas. Source: Environmental Protection Agency (EPA) Safe Drinking Water Information System (SDWIS). (Report Figure 37)

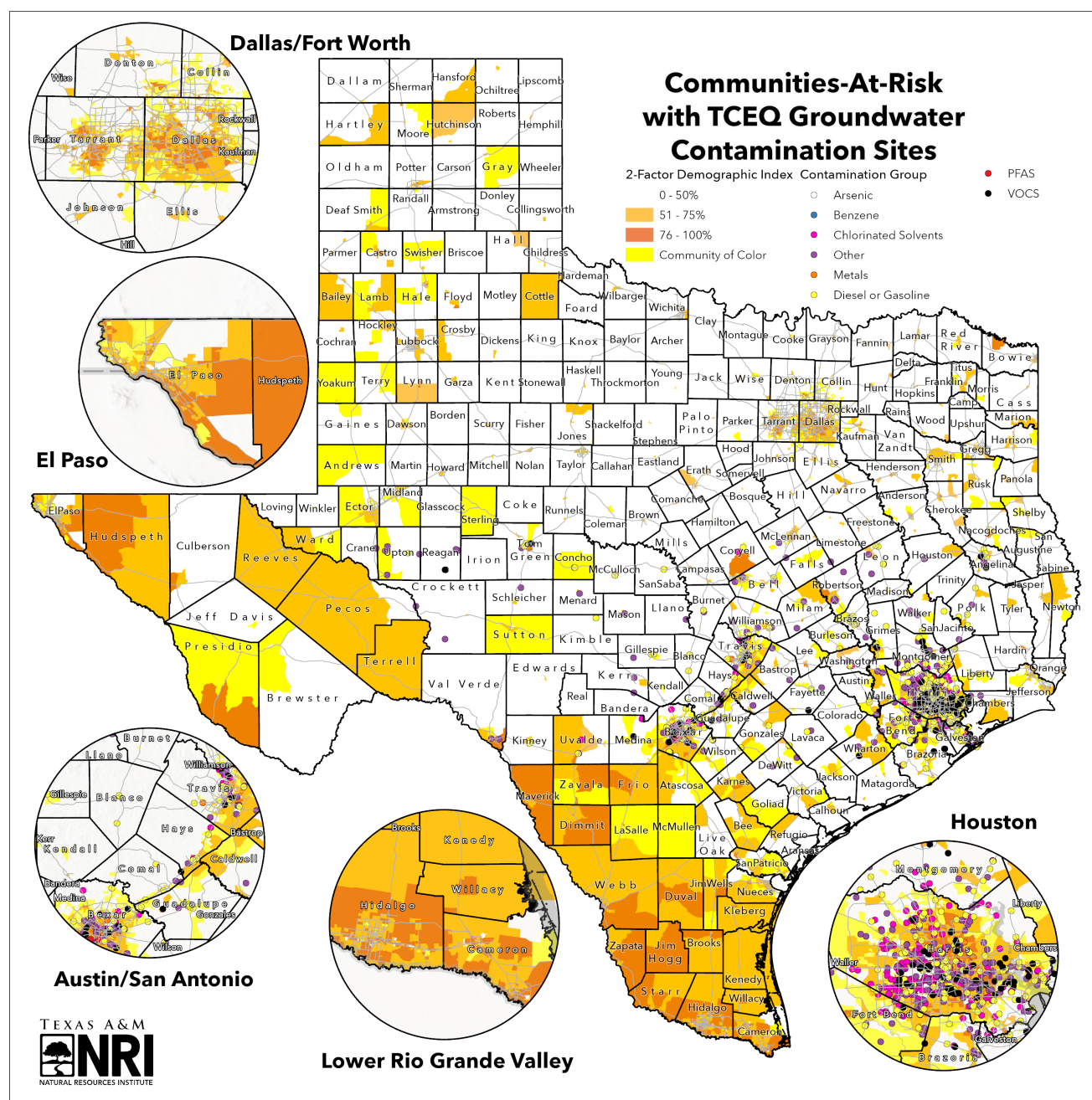


Figure 6. Groundwater contamination sites and local aquifers and Communities-At-Risk in Texas. Source: Texas Commission on Environmental Quality (TCEQ). (Report Figure 38)

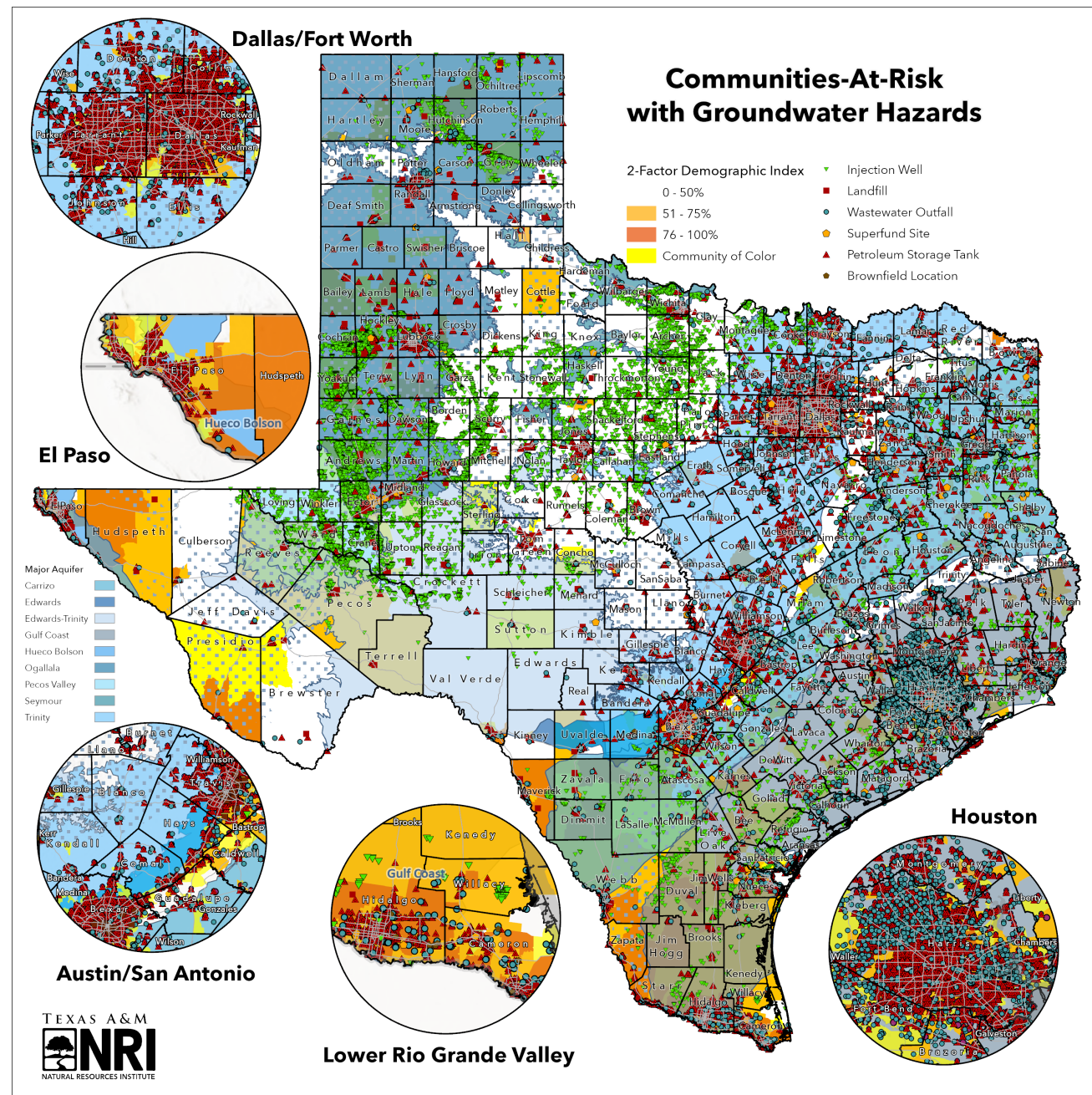


Figure 7. Potential groundwater quality hazards and local aquifers and Communities-at-Risk in Texas. Source: Texas Commission on Environmental Quality (TCEQ). (Report Figure 39)

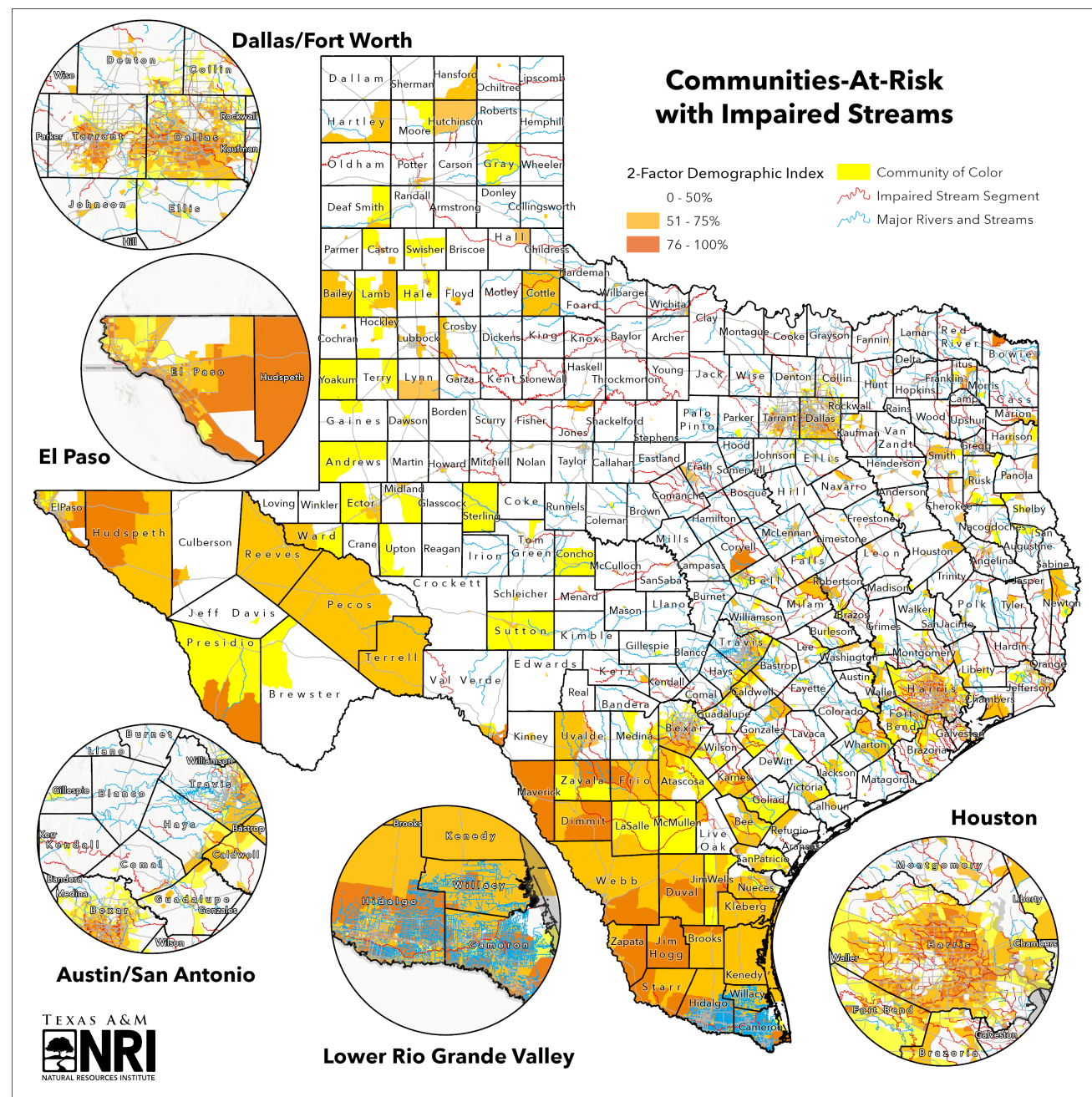


Figure 8. Impaired streams and Communities-at-Risk in Texas. Source: Texas Commission on Environmental Quality (TCEQ). (Report Figure 40)

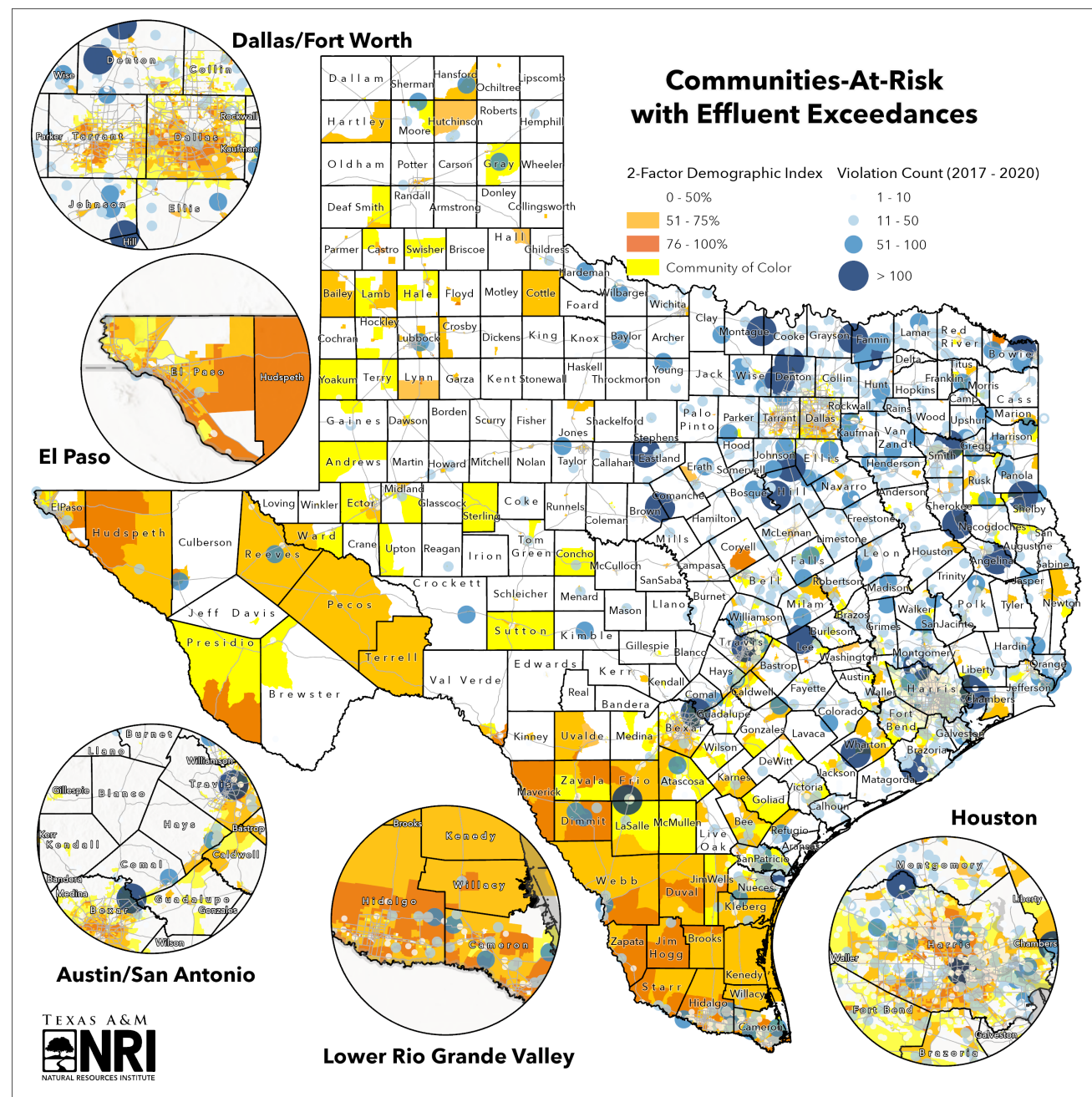


Figure 9. Facilities with excessive effluent exceedances and Communities-At-Risk in Texas. Source: Texas Commission on Environmental Quality (TCEQ). (Report Figure 41)

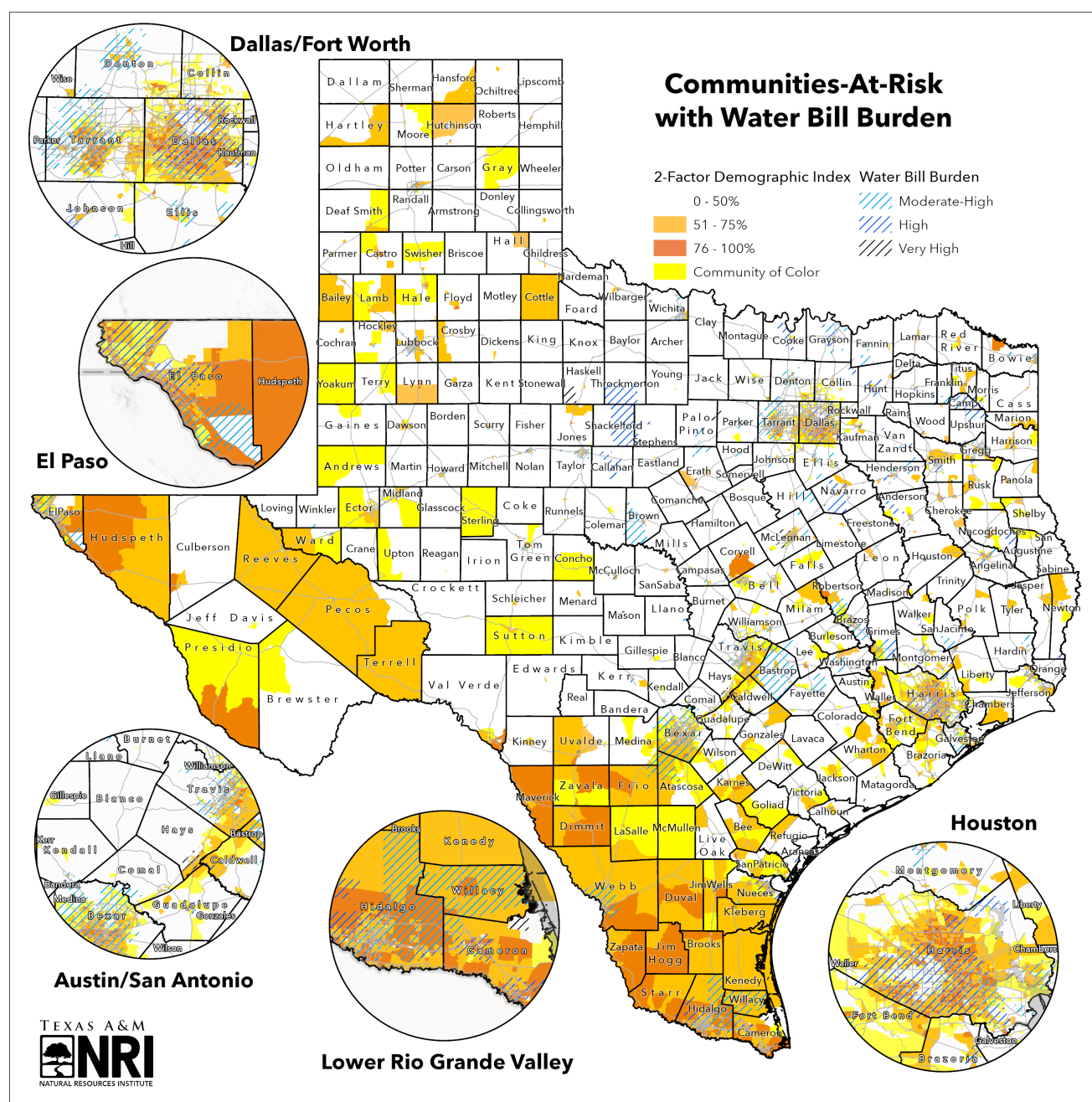


Figure 10. Water bill burden levels for public water systems and Communities-At-Risk in Texas. Source: The Nicholas Institute for Environmental Policy Solutions. (Report Figure 42)

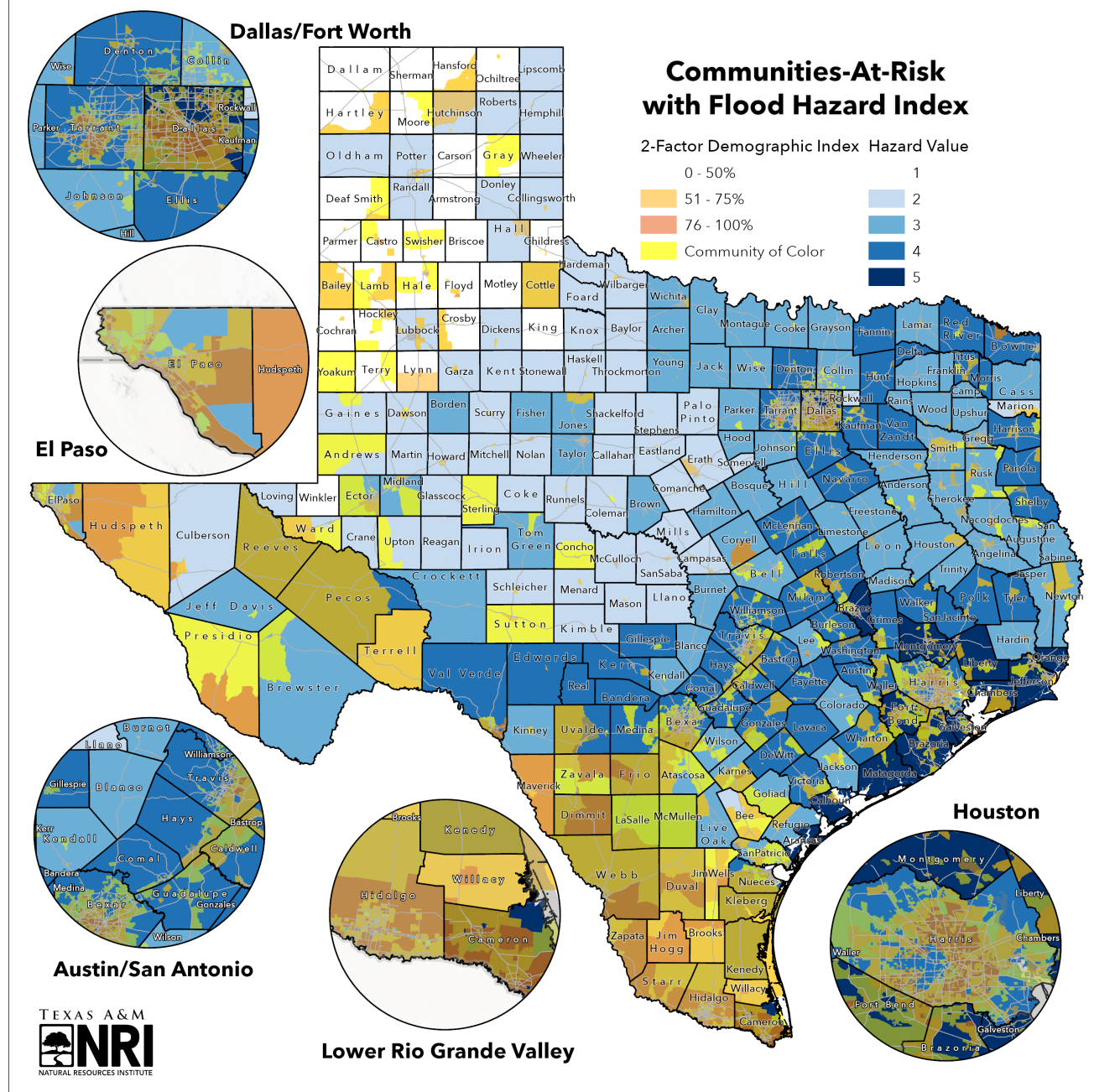


Figure 11. Flood hazard index and Communities-At-Risk by county in Texas. Sources: Natural Resources Conservation Service (NRCS), National Oceanic and Atmospheric Administration (NOAA). (Report Figure 43)

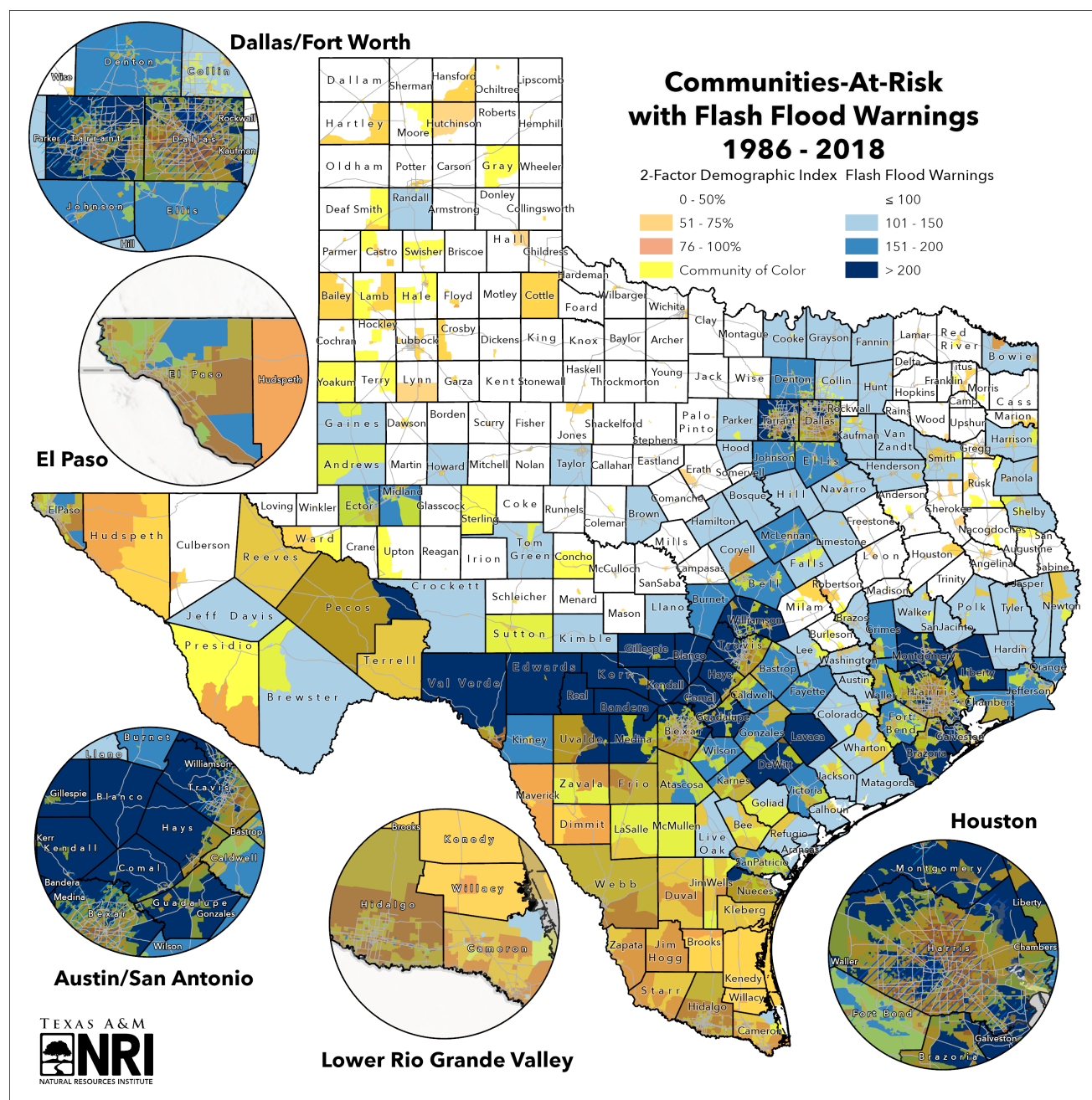


Figure 12. Relative flood risk in Texas using flash flood warnings from 1986-2018 and Communities-At-Risk by county and 100-year flood event risk zones. Source: Texas Water Development Board (TWDB). (Report Figure 44)

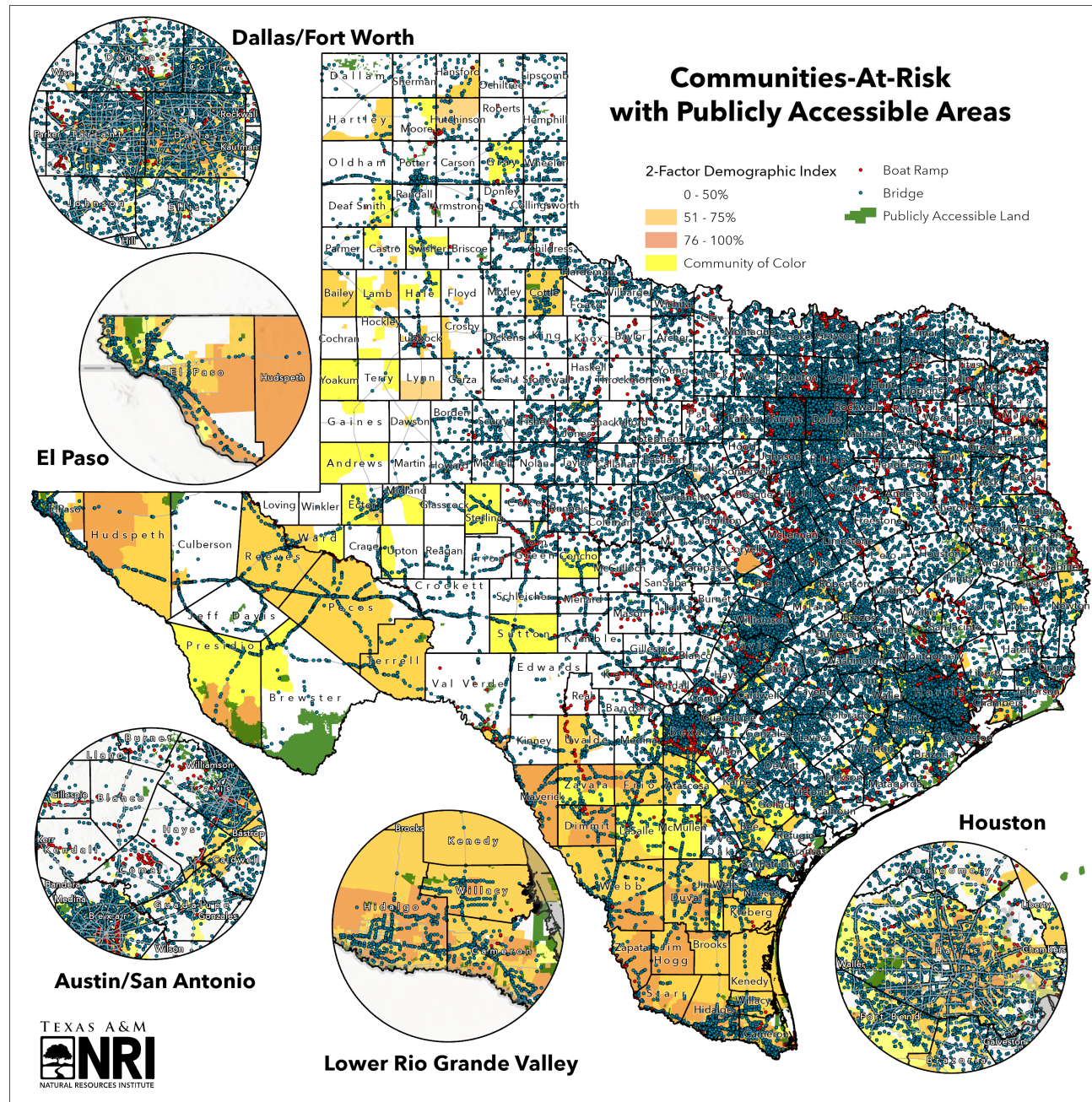


Figure 13. Recreational water access in Texas, including publicly accessible land, boat ramps, and bridges and Communities-At-Risk. Source: Texas Parks and Wildlife Department (TPWD), Texas Department of Public Transportation (TXDOT). (Report Figure 45)

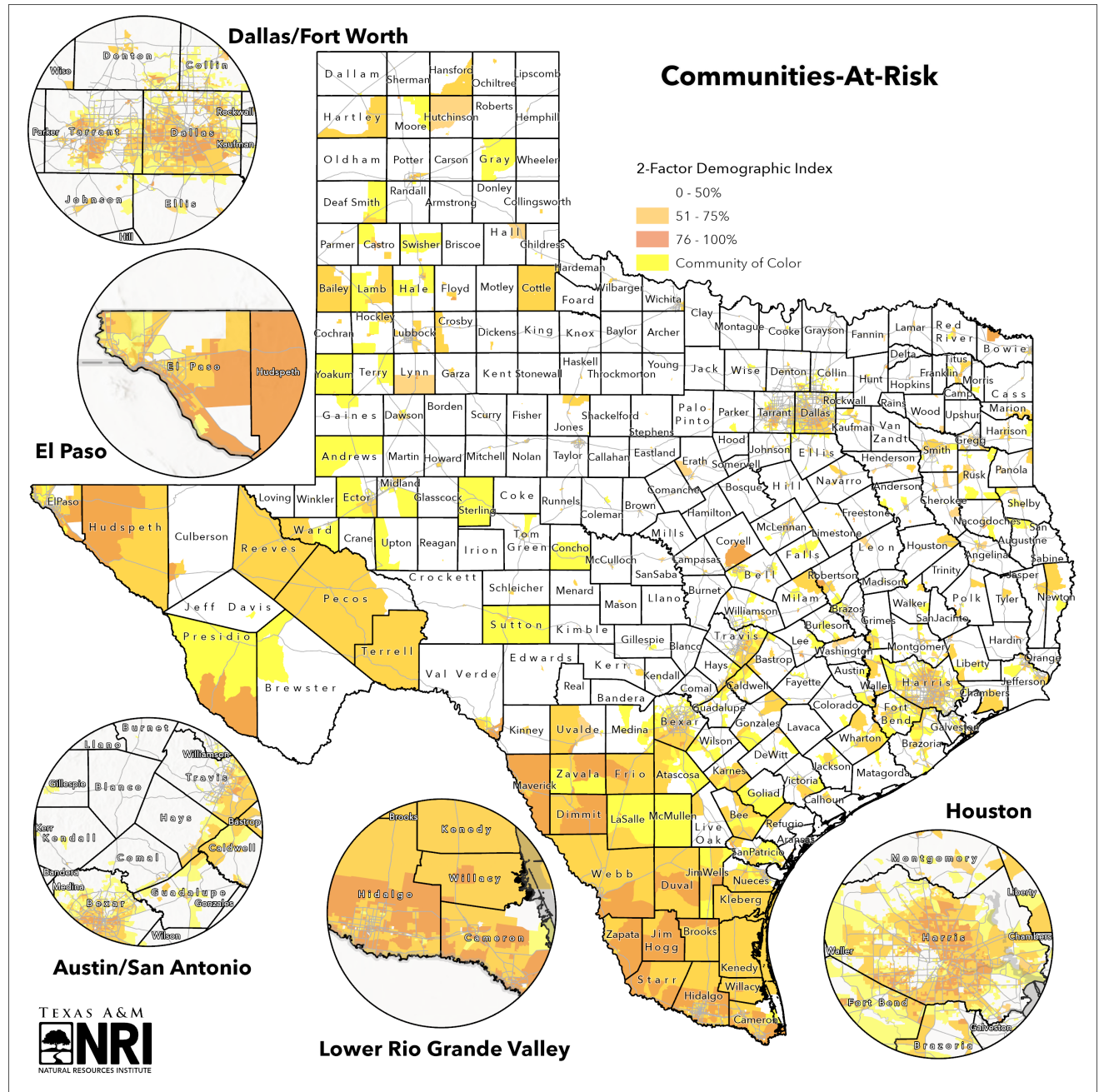


Figure 14. Communities At-Risk in Texas. Source: U.S. Census Bureau, Environmental Protection Agency (EPA) EJSCREEN. (Report Figure 46)

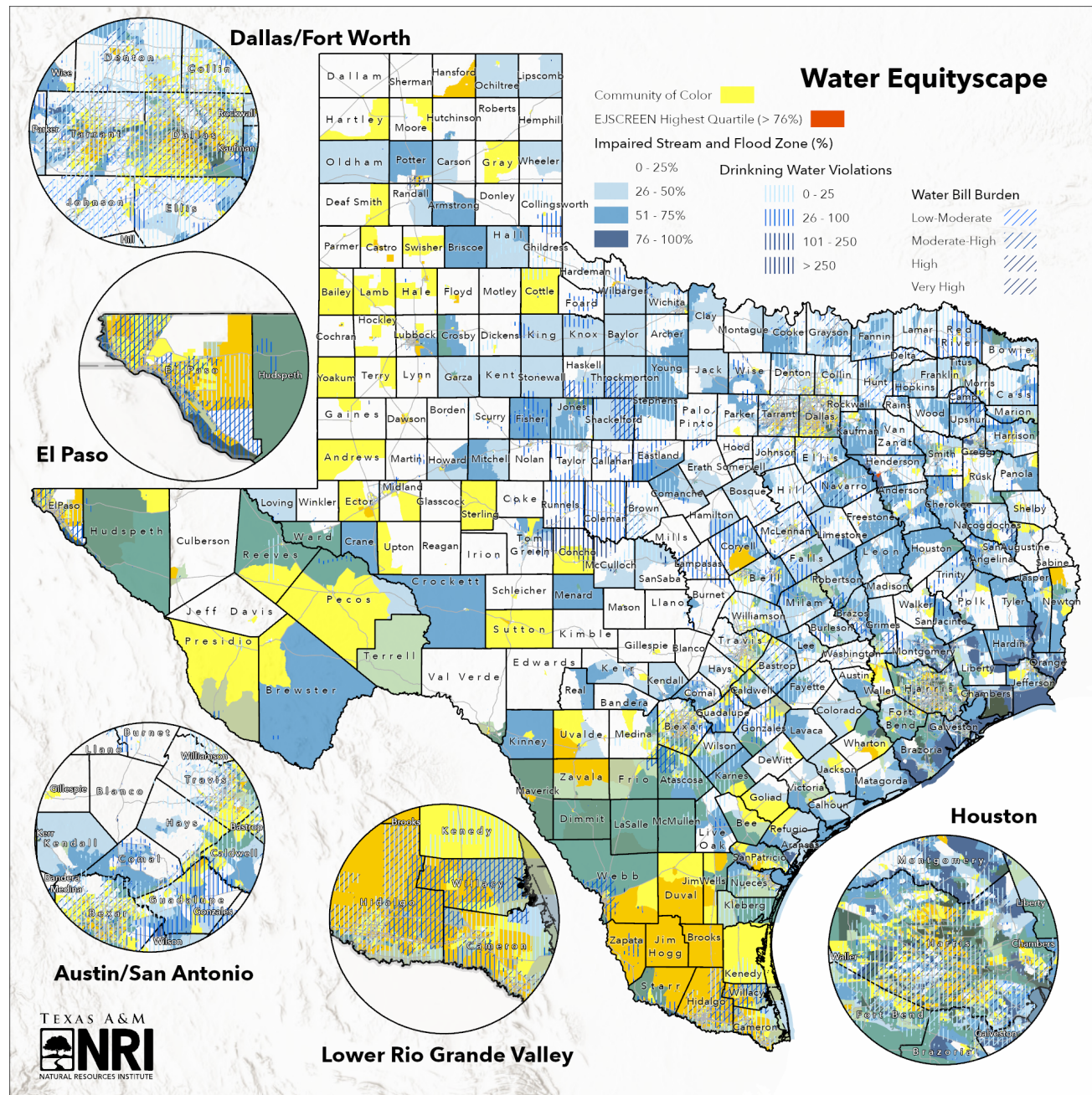


Figure 15. Water Equityscape combining Communities At-Risk and water challenges in Texas. Source: Compiled by NRI from Texas Commission on Environmental Quality (TCEQ), Texas Water Development Board (TWDB), The Nicholas Institute, Environmental Protection Agency (EPA), U.S. Census Bureau. (Report Figure 48)

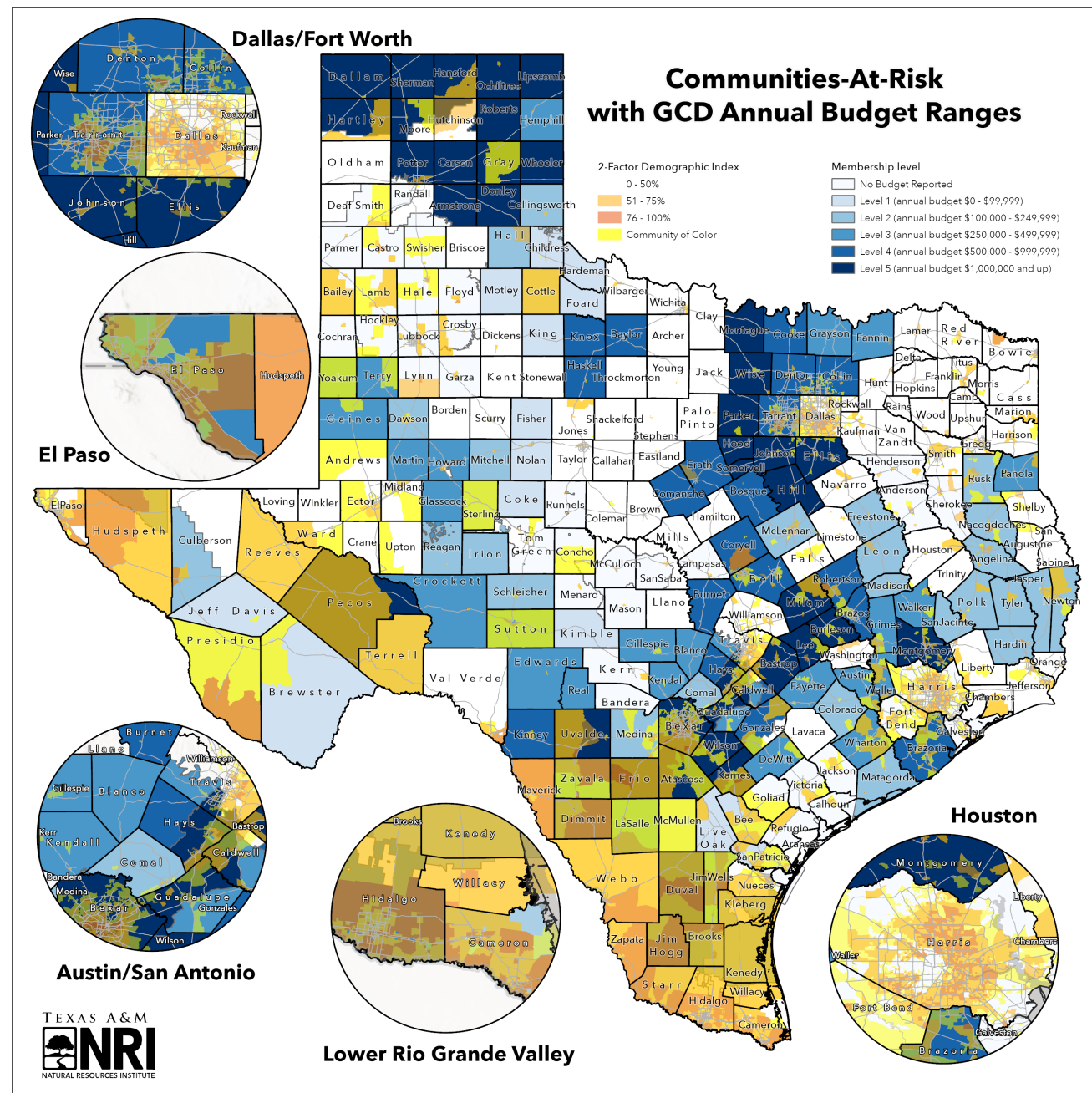


Figure 16. Groundwater Conservation Districts and budget ranges in Texas. Source: Texas Alliance of Groundwater Districts. (not on report)

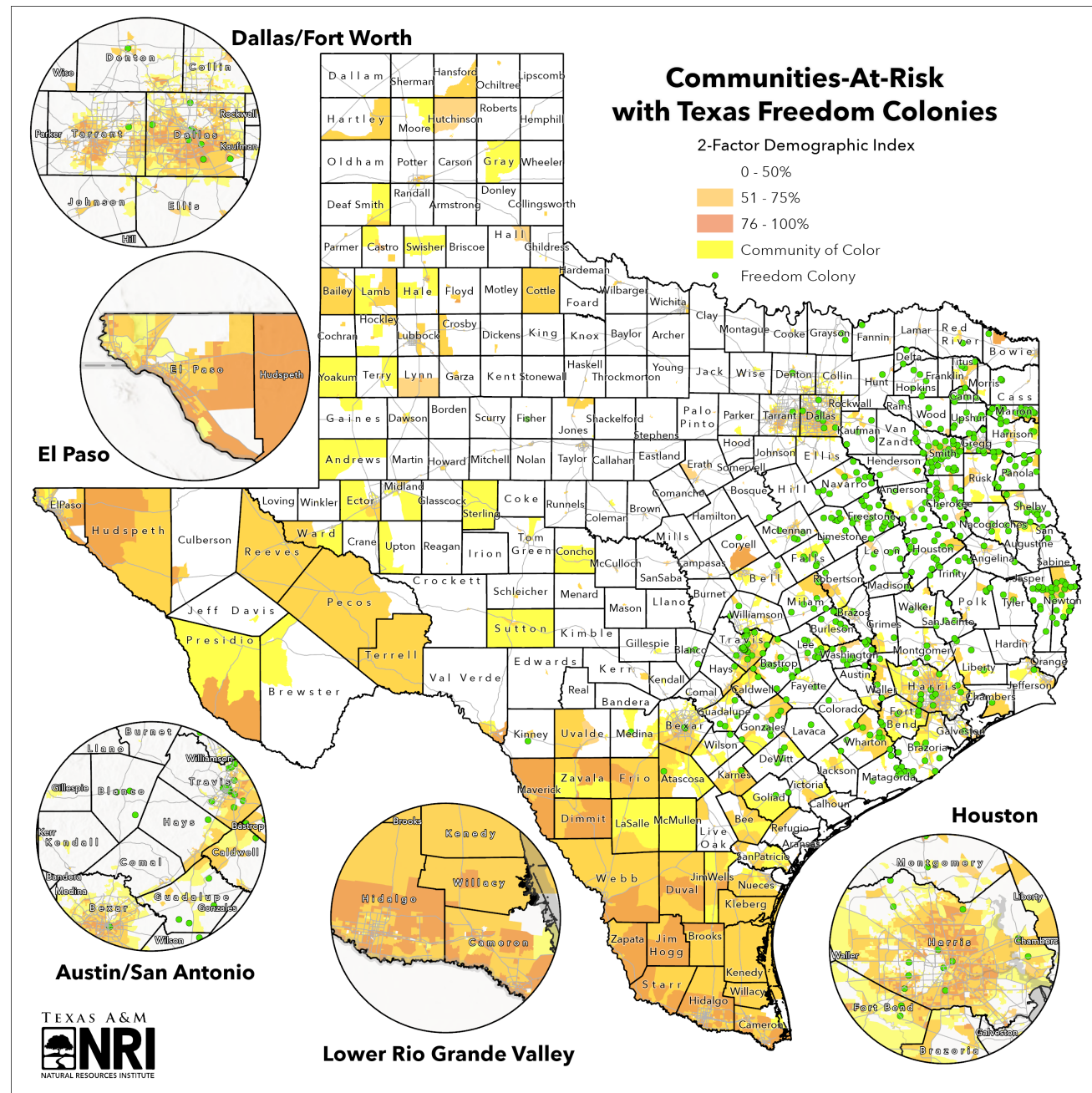


Figure 17. Texas Freedom Colonies and Communities-at-Risk. Source: Data provided by Texas Freedom Colonies and compiled by NRI from the Texas Freedom Colonies Project, The Office of the Attorney General, Texas Commission on Environmental Quality (TCEQ), Texas Water Development Board (TWDB), The Nicholas Institute, Environmental Protection Agency (EPA). (not on report).

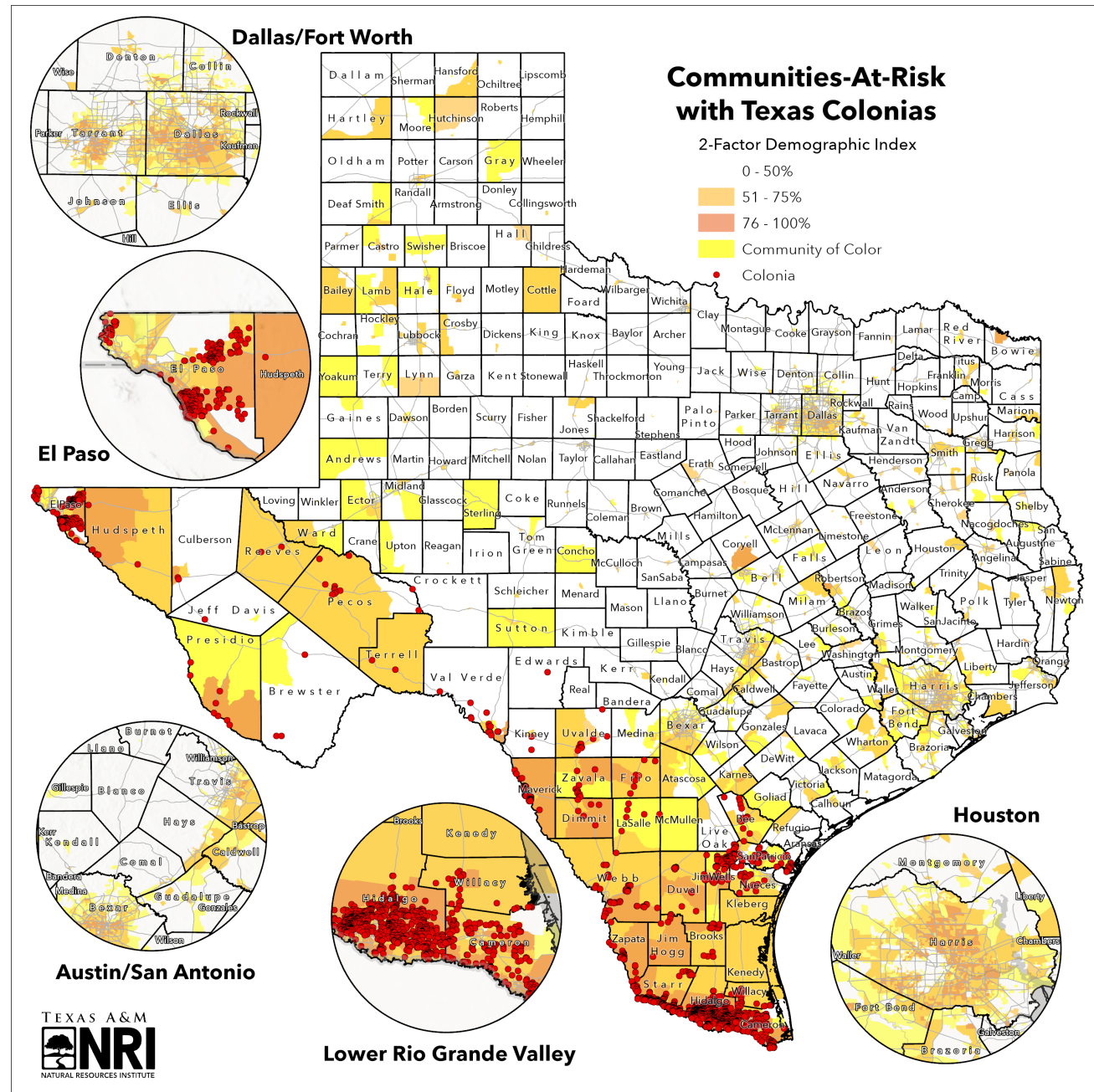


Figure 18. Texas Colonias and Communities-at-Risk. Source: Compiled by NRI from the Texas Freedom Colonias Project, The Office of the Attorney General, The Nicholas Institute, Environmental Protection Agency (EPA). (not on report).

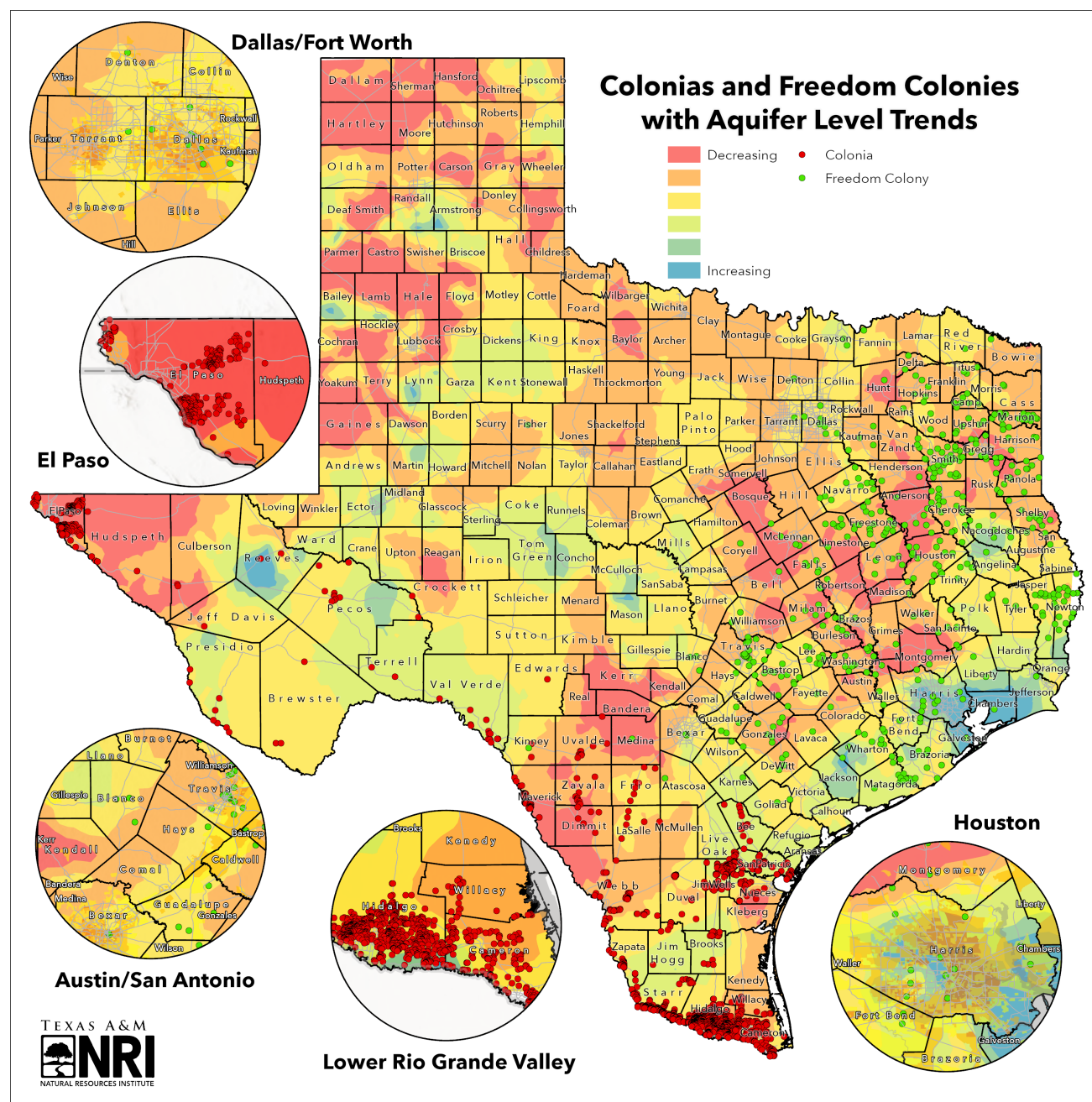


Figure 19. Texas Colonias, Colonias and Aquifer level trends over time (2000-present). Source: Compiled by NRI from the Texas Freedom Colonias Project, Texas Water Development Board (TWDB), The Nature Conservancy, The Office of the Attorney General. (not on report).

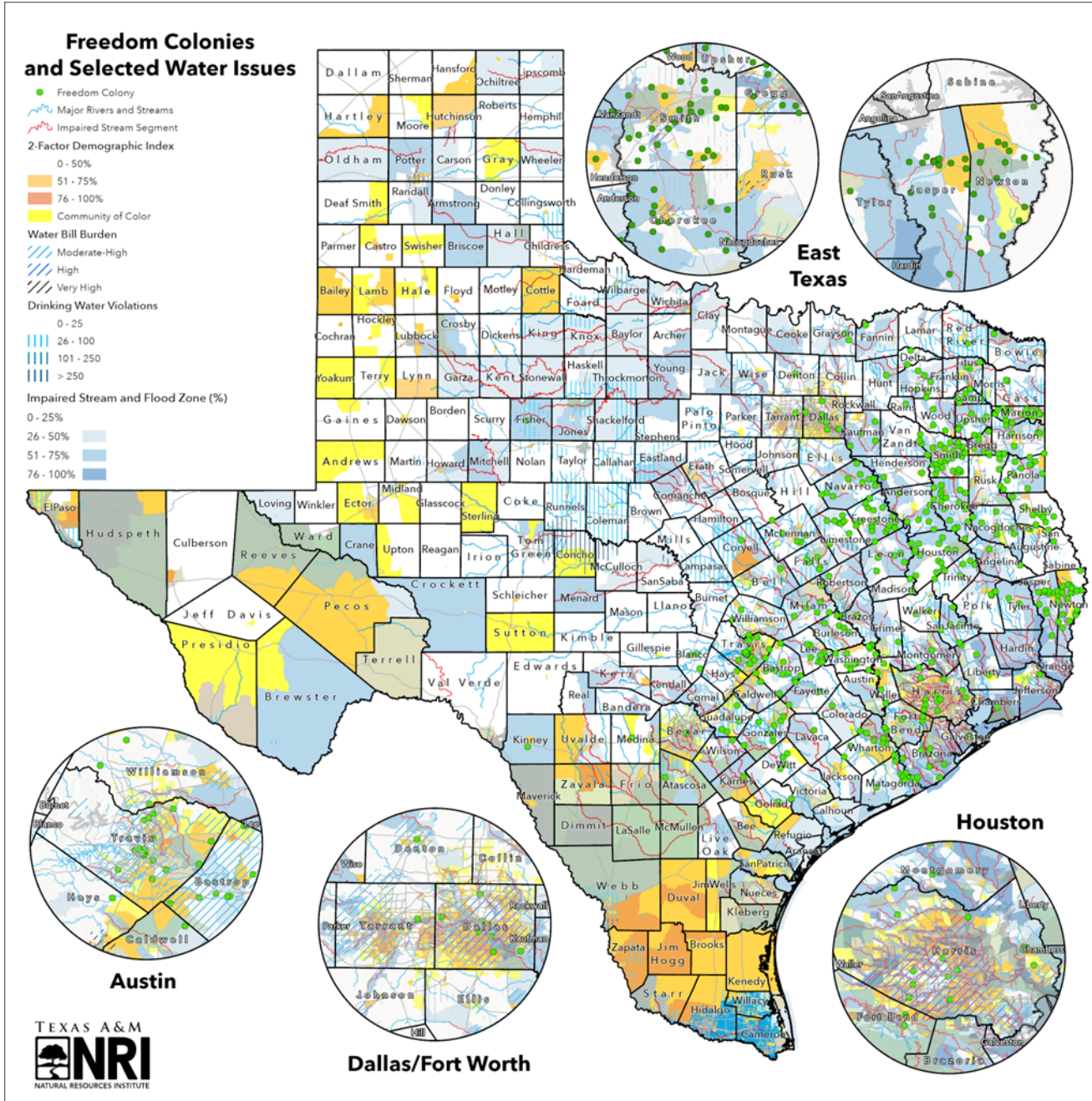


Figure 20. Texas Freedom Colonies and water challenges. Source: Compiles by NRI from the Texas Freedom Colonies Project, Texas Water Development Board (TWDB), The Nature Conservancy, The Office of the Attorney General. (not on report).



Suggested citation:

Lopez, A., R. Lopez, M. Crawford, A. Smith, D. Barrientos, B. Wegner-Hicks, O. Muñoz, A. Roberts, V. Puig-Williams, and D. Mueller. (2023). Texas water trends - addendum. Texas A&M Natural Resources Institute, College Station, Texas, USA.

