

Quail abundance, hunter effort, and harvest of two texas quail species: implications for hunting management

John M. Tomeček, Brian L. Pierce and Markus J. Peterson

J. M. Tomeček (orcid.org/0000-0002-7494-283X)(tomecek@tamu.edu), Dept of Wildlife and Fisheries Sciences, Texas A&M AgriLife Extension Service, Texas A&M Univ., 7887 US Highway 87 North, San Angelo, TX 76901, USA. – B. L. Pierce, Inst. for Renewable Natural Resources, Texas A&M Univ., MS 2260, College Station, TX 77843-2260, USA. – M. J. Peterson, Dept of Wildlife and Fisheries Sciences, Texas A&M Univ., MS 2258, College Station, TX 77843-2258, USA

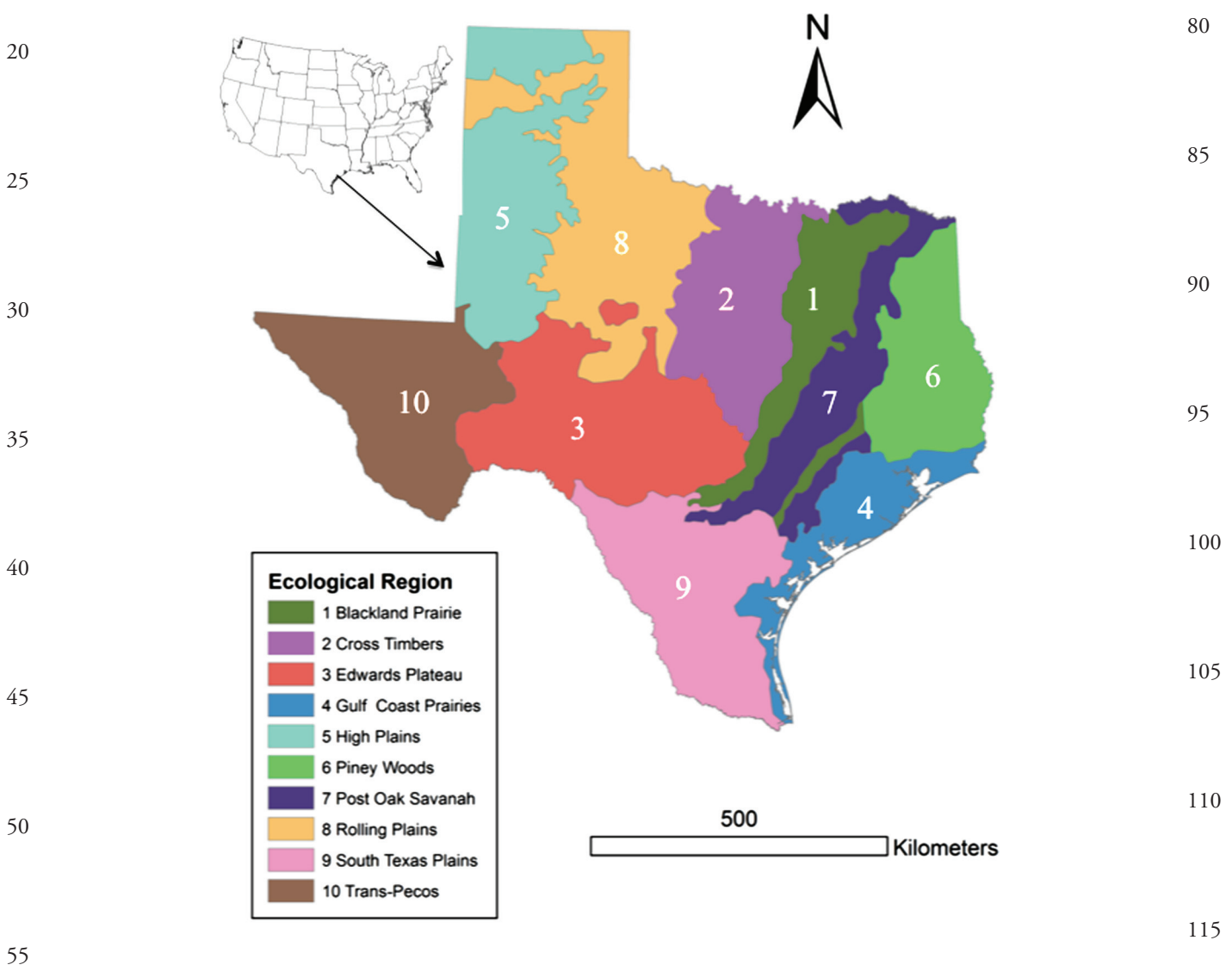
Managing exploited species characterized by declining abundance, such as northern bobwhite *Colinus virginianus* and scaled quail *Callipepla squamata*, presents challenges for regulatory agencies and wildlife managers. Our objective was to determine the influence of quail abundance and quail hunter effort on annual bobwhite and scaled quail harvest in Texas, USA. We formulated competing models accounting for quail harvest at both statewide and regional scales using hunter survey and quail abundance data collected by the Texas Parks and Wildlife Department (1978–2012) and evaluated them using multiple linear regression and model selection (AICc). Statewide bobwhite and scaled quail harvest was best predicted by models that included quail abundance, quail hunter-days or total quail hunters, respectively ($R^2 = 0.969$ and 0.915 , respectively). Our most plausible models also predicted regional quail harvest reasonably well ($R^2 \geq 0.67$), but in some regions diverged from statewide models, with hunter effort alone best explaining quail harvest. Despite our models' high predictive ability, current hunting regulations do not reflect variability in factors driving harvest at the spatial scales we evaluated. Species characterized by limited dispersal ability, such as quails, are at risk of localized overharvest when hunting management cannot limit harvest at the same spatial scale where hunting occurs. For Texas quails, harvest management implemented by individual property managers, rather than statewide hunting regulations, is the most appropriate way to avoid localized overharvest because property managers can control harvest at the scale relevant to both quails and quail hunters.

Management of exploited wildlife species presents difficulties for those tasked by statute with their conservation, particularly when abundance of these species has declined for decades and numbers fluctuate markedly among years. Stakeholders often perceive short-term (3–5 year) swings in abundance as proof that the long-term decline in abundance is markedly worsening or improving when neither conclusion is justified. Despite the fact that limiting hunting season length, bag limits, and/or means and methods contributed to the restoration of some exploited species (Leopold 1933, Allen 1954, Rosene 1969, Ayal and Baharav 1983, deCalesta 1983, Miller 1990), others still experienced long-term declines in abundance and range extent despite these measures (Marboutin and Peroux 1995, Johnson and Braun 1999, Silvy and Hagen 2004). Logically, this is true when harvest is not the sole factor in declines in abundance and range, or if harvest is totally compensatory to non-harvest mortality. Harvest management for two New World quail species, northern bobwhite *Colinus virginianus* (hereafter bobwhite) and scaled quail *Callipepla squamata*, in the United States epitomizes this situation. Bobwhite, once one of the most common and widely hunted North American gamebird species, has declined in abundance over large

spatial areas since at least the 1960s and perhaps for more than 100 years; scaled quail abundance has declined for several decades, especially in the State of Texas, USA (Leopold 1931, Peterson et al. 2002, Merola-Zwartjes 2005, Sauer et al. 2012). Although most quail biologists agree that habitat loss, fragmentation, and degradation, rather than harvest, are the primary causes of declining bobwhite and scaled quail abundance and range (Roseberry and Klimstra 1984, Peterson 2001, Williams et al. 2004), there is considerable stakeholder pressure to alter hunting regulations in an attempt to halt or reverse these long-term trends (Godfrey 2012, Simms 2012, Texas Parks and Wildlife Commission 2012).

Quail hunting opportunities are readily available in Texas for those who can afford hunting leases on private property. Most hunters hunt with shotguns over dogs, bounded by a season between late October and late February, with a statewide daily bag limit of 15 birds. Because few hunters hunt the entire season, and fewer still fill a daily bag limit, quail hunting in Texas is functionally unregulated, except by land managers or hunters themselves (Peterson and Perez 2000, Peterson 2001). Peterson and Perez (2000) demonstrated that both bobwhite and scaled quail hunting in Texas was

0 consistent with the hypothesis that quail hunting was largely
 1 self-regulatory (hunter effort responds to fluctuations in
 2 quail abundance). This relationship seems clear when one
 3 compares the long-term trends for quail abundance and
 4 hunter effort for both statewide and ecoregion spatial scales
 5 (Fig. 1–5). Peterson and Perez (2000) maintained that hunters
 6 expended less time hunting quail (i.e. spent few days
 7 afield or did not hunt at all) during low as opposed to high
 8 quail abundance years. Guthery et al. (2004a) examined
 9 roadside surveys and harvest data for bobwhites in the States
 10 of Oklahoma and Missouri, USA, concluding that bobwhite
 11 hunting was not self-regulatory at low quail densities. The
 12 ratio of hunters to bobwhites tended to increase as bobwhite
 13 and hunter numbers decreased, and the remaining hunters
 14 harvested a greater proportion of remaining bobwhites
 15 than in times of greater abundance due to increased hunter
 16 efficiency (birds killed per hunter per day), a phenomenon
 17 known as hyperstability (Hilborn and Walters 1992,
 18 Erisman et al. 2011, Ward et al. 2013). Thus, under such
 19 hyperstable harvest the number of birds harvested would be
 20 disproportionate to the number of hunters afield and quail
 21 abundance. Guthery et al. (2004b) reported similar results
 22 for bobwhites, scaled quail, and Gambel's quail *Callipepla*
 23 *gambelii* using data from the States of Arizona, Kansas,
 24 Missouri, Oklahoma and Texas, USA. Regardless, both the
 25 self-regulatory (Peterson and Perez 2000) and differential
 26 hunter efficiency (Guthery et al. 2004a, b) explanations predict
 27 that modestly restrictive daily bag limits (e.g. 5–7 birds)
 28 may be too conservative when quail are abundant, yet too
 29 liberal when quail are scarce (Peterson 2001). Whereas both
 30 explanations suggest that restrictive fixed daily bag limits
 31 (e.g. 2–3 birds) and/or major reductions in season length
 32 (e.g. 1–2 week season) may indeed prevent overharvest during
 33 periods of low quail abundance, Peterson (2001) and
 34 Guthery et al. (2004a, b) asserted that many quail hunters
 35 are unlikely to view such restrictive changes favorably.



Source: Gould, F. W. 1969. Texas plants: a checklist and ecological summary.
 – Texas Agricultural Experimental Station, Texas A&M University System.

Figure 1. Texas ecological regions (Gould 1969). Trends in northern bobwhite abundance (mean quail per 32 km survey route), total number of bobwhite hunters, and total bobwhite hunter-days in Texas, 1978–2012.

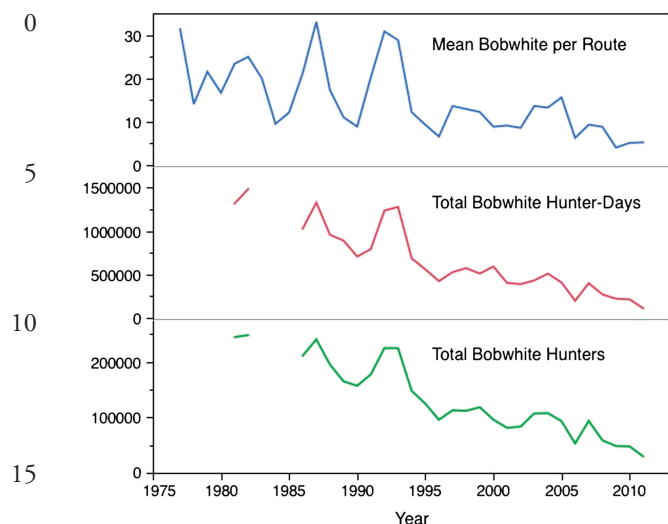


Figure 2. Trends in northern bobwhite abundance (mean quail per 32 km survey route), total number of bobwhite hunters, and total bobwhite hunter-days in Texas, 1978–2012.

Although many factors (e.g. access, weather) influence quail harvest, a clear understanding of both quail abundance and hunter effort is required to achieve harvest objectives. Logically, quail harvest is both additive and compensatory to non-harvest mortality: some quail that would have otherwise survived were shot, where some shot would have died anyway. Although quail biology, additive and compensatory models of harvest mortality, and overwinter survival have been studied in detail, the contribution of hunter effort to quail harvest has received less attention. Texas presents an excellent opportunity for clarifying the influence of the quail abundance and hunter effort on quail harvest for four primary reasons. First, bobwhite and scaled quail occur both allopatrically and sympatrically in Texas, with one or both species occupying portions of all 10 ecological regions of the state (Fig. 5; Gould 1969, Hernández and Peterson 2007, Silvy

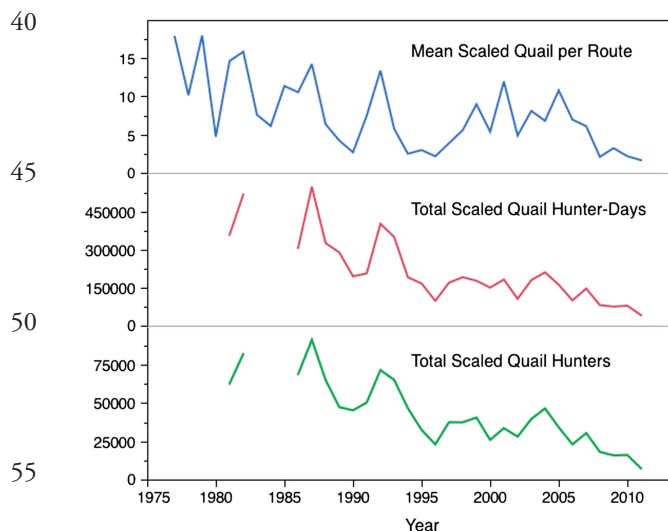


Figure 3. Trends in scaled quail abundance (mean quail per 32 km survey route), total number of scaled quail hunters, and total scaled quail hunter-days in Texas, 1978–2012.

et al. 2007). Second, Texas Parks and Wildlife Department (TPWD) used identical methods for monitoring abundance and harvest for these species since 1978 (Peterson and Perez 2000, Purvis 2012). Third, the abundance of bobwhite and scaled quail has declined for many years, primarily due habitat conversion and loss (Brennan 1991, Bridges et al. 2002, Lusk et al. 2002, Merola-Zwartjes 2005), with marked fluctuations in abundance among years due to environmental stochasticity (Bridges et al. 2001, Lusk et al. 2007). Finally, stakeholders recently demonstrated a continued belief that minor changes to hunting regulations could halt or reverse the decline in quail abundance in Texas (Texas Parks and Wildlife Commission 2012).

Our objective was to determine the influence of quail abundance and quail hunter effort on annual total harvest of bobwhites and scaled quail in Texas. We explore how localized overharvest can contribute to declining abundance and range extent of quails and similar exploited species characterized by limited dispersal ability. We end with suggestions for managing harvest for such species more effectively.

Methods

We modeled total annual bobwhite and scaled quail harvest using quail abundance and harvest data from TPWD roadside counts (1978–2012) and the TPWD Small Game Harvest Survey Results (1981–1983 and 1986–2012), respectively. TPWD staff biologists survey these 32.2 km (20 mile) transects at sunrise (east-to-west) or one hour before sunset (west-to-east) each August at a rate of 32.2 km h⁻¹ (20 mph), and record the number of quail seen on every 1.6 km of road (1 mile). Peterson and Perez (2000) detail the design and history of these surveys and incongruity of survey years. We used counts of abundance from 162 TPWD roadside survey routes in the High Plains, Rolling Plains, Edwards Plateau, South Texas Plains, Gulf Prairies, Cross Timbers and Trans-Pecos ecological regions of Texas (Fig. 5; Gould 1969). We did not include data from the remaining three ecological regions (i.e. Piney Woods, Post Oak Savannah and Blackland Prairies) because TPWD discontinued quail surveys for these regions in 1988. We used hunter harvest survey data for the same seven ecological regions (182 counties). We first pooled these data at the statewide level for analysis to reflect the scale at which hunting is currently regulated. We then analyzed these data at the ecological region level for each species to determine whether there were differences between the hunting of bobwhites and scaled quail at statewide and regional scales.

We developed a series of competing models, using multiple linear regression, with the total number of bobwhite or scaled quail harvested per year (hereafter total quail harvest) as the dependent variable in all models. Because quail harvest cannot occur without both quarry and hunters, our independent variables represented these factors. Specifically, we used the mean number of bobwhites or scaled quail observed on each August survey route (hereafter quail abundance) to represent quail abundance and the total number of quail hunters (hereafter total quail hunters), and the total number of days hunters spent afield hunting quail (hereafter quail hunter-days) to represent hunter behavior.

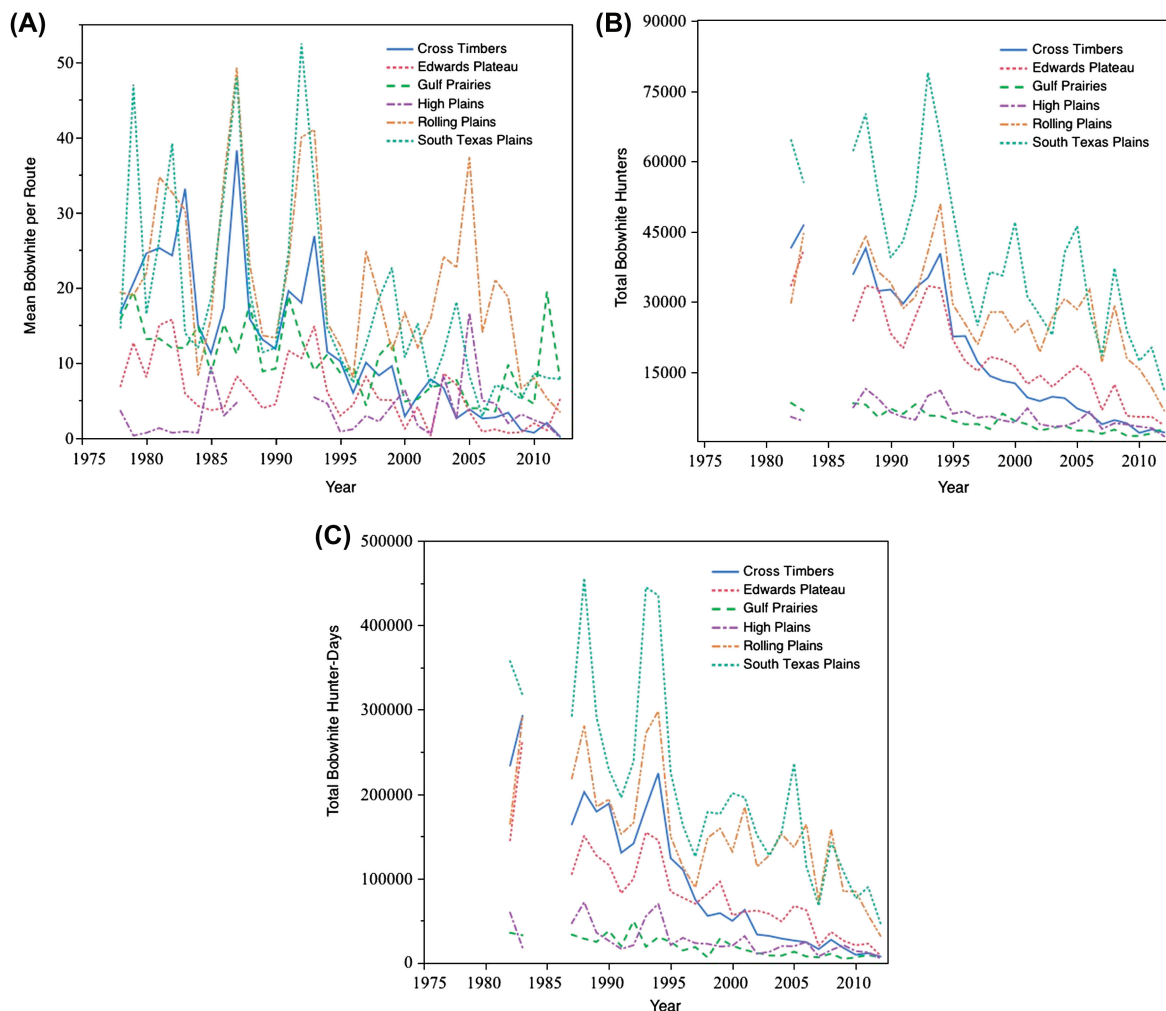


Figure 4. Trends in (a) northern bobwhite abundance (mean quail per 32 km survey route), (b) total number of bobwhite hunters, and (c) total bobwhite hunter-days in Texas by ecological region, 1978–2012.

These variables representing hunter effort included all hunters, regardless of hunting success. Although the summary of annual Small Game Harvest Survey Results (Purvis 2012) includes the mean number of birds harvested per hunter per day calculated from other variables, only total quail harvest, total quail hunters, and quail hunter-days are provided by respondents, so we used only these three variables in our models.

Because these count data are Poisson distributed, we log-transformed each variable (Zar 2010), and checked that transformed data were normally distributed using normal probability plots. Because it is reasonable to assume that harvest survey variables could be related, we tested for multicollinearity among these variables using the variance inflation factor (VIF; Neter et al. 1996). Total quail hunters and quail hunter-days were highly collinear ($VIF = 21.09\text{--}53.55$), so we restricted these variables to separate regression models, and thus did not provide a global model in our candidate model set. Our candidate models included all other combinations of quail abundance, total quail hunters, and quail hunter-days. Because quail hunters alter participation and effort due to changes in quail abundance harvest (Peterson and Perez 2000, Guthery et al. 2004a), we also modeled the interaction between quail abundance and total quail hunters or quail hunter-days. Residual plots for all analy-

ses were randomly distributed. We ran all models separately for bobwhites and scaled quail using JMP Pro 11.0.0 (SAS Institute 2013), and selected among candidate models using Akaike's information criterion corrected for small sample size (AIC_c). Models were considered plausible if they were within the 95% confidence set of models ($\sum W_i \geq 0.95$). We did not present models that included interaction terms if the model added one parameter (interaction term) and had a $-2 \log$ likelihood ($-2\ln L$) similar to the other model, and the Δ_i was within 2 units of the model without the interaction (Burnham and Anderson 2002; p. 131). We included coefficients of determination (R^2) in tables so that we could determine how much of the total variance in the data was explained by plausible models (Guthery et al. 2005).

Results

Statewide

Statewide bobwhite harvest in Texas was best accounted for by the model that included quail abundance and quail hunter-days (Table 1). The model including quail abundance and total quail hunters also was plausible, but

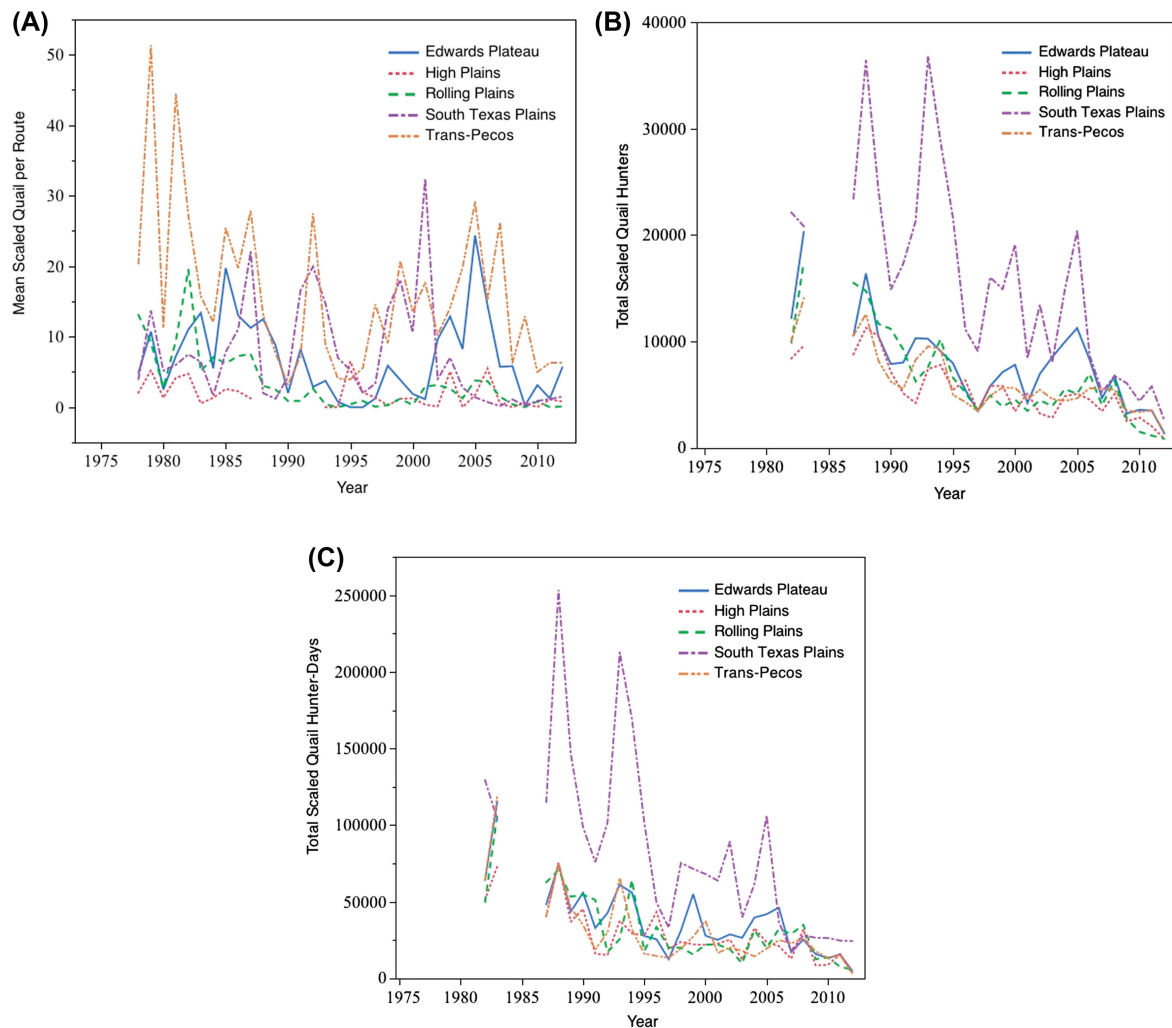


Figure 5. Trends in (a) scaled quail abundance (mean quail per 32 km survey route), (b) total number of scaled quail hunters, and (c) total scaled quail hunter-days in Texas by ecological region, 1978–2012.

was 5.65 times less likely to be the best-supported model among those evaluated than the best-supported model based on evidence ratios (ω_1/ω_i ; Table 1). None of the models including interactions were plausible. The only plausible model for scaled quail harvest at the statewide

level included quail abundance and total quail hunters (Table 1). Interestingly, all models evaluated did a reasonably good job of accounting for the variability in bobwhite and scaled quail harvest among years ($R^2 \geq 0.830$, and $R^2 \geq 0.672$, respectively; Table 1).

Table 1. Candidate regression models using quail abundance (QA), total quail hunters (QH), and total quail hunter-days (QHD) to account for statewide annual total harvest of northern bobwhites and scaled quail in Texas from log-transformed harvest and abundance survey data 1978 through 2012 using AICc model selection.

Species	Model	K^a	$-2\ln L$	$AICc^b$	Δ_i^c	ω_i^d	ω_1/ω_i	R^2
Northern bobwhite	QA + QHD	3	-29.56	-22.56	0.0	0.839	1	0.969
	QA + QH	3	-26.10	-19.10	3.5	0.149	5.651	0.965
	QHD	2	-17.54	-13.06	9.5	0.007	115.833	0.952
	QH	2	-16.65	-12.17	10.4	0.005	180.594	0.950
Scaled quail	QA	2	16.09	20.57	43.1	0.000	2328872309	0.830
	QA + QH	3	2.10	9.10	0.0	0.983	1	0.915
	QA + QHD + (QA \times QHD)	4	8.36	18.09	9.0	0.011	89.873	0.894
	QH	2	15.97	20.45	11.3	0.003	291.081	0.859
	QA + QHD	3	13.69	20.69	11.6	0.003	328.504	0.871
	QHD	2	24.95	29.43	20.3	0.000	25936.331	0.865
	QA	2	39.61	44.09	35.0	0.000	39673737.390	0.672

^ano. of estimable parameters, including the intercept.

^bAkaike's information criterion corrected for small sample size.

^c ΔAIC .

^dAkaike weight.

0 Table 2. Set of plausible ($\sum W_i \geq 0.95$) candidate regression models using quail abundance (QA), total quail hunters (QH), and total
 quail hunter-days (QHD) to account for annual total harvest of bobwhite in six ecological regions of Texas from log-transformed harvest and
 abundance survey data from the years 1978 through 2012 using AICc model selection. 61

	Ecological region	Model	K^a	$-2\ln L$	AICc ^b	Δ_i^c	ω_i^d	ω_i/ω_1	R^2	
5	High Plains	QA + QH	3	9.34	16.60	0.0	0.468	1	0.891	65
		QH	2	12.29	16.89	0.3	0.406	1.155	0.877	
		QA + QH + (QA \times QH)	4	9.37	19.60	3.0	0.105	4.462	0.892	
	Rolling Plains	QA + QHD	3	-22.01	-15.01	0.0	0.609	1	0.962	
		QA + QHD + (QA \times QHD)	4	-22.21	-12.47	2.5	0.171	3.565	0.963	
		QA + QH	3	-18.70	-11.71	3.3	0.117	5.228	0.957	
10	Edwards Plateau	QHD	2	-6.39	-1.91	0.0	0.399	1	0.949	70
		QA + QH + (QA \times QH)	4	-10.38	-0.65	1.3	0.213	1.879	0.957	
		QH	2	-4.27	0.21	2.1	0.139	2.885	0.945	
	South Texas Plains	QA + QHD	3	-6.47	0.53	2.4	0.118	3.380	0.950	
		QA + QH	3	-4.94	2.06	4.0	0.055	7.252	0.947	
		QHD	2	-12.03	-7.55	0.0	0.659	1	0.928	
15	Gulf Coast Prairies	QA + QHD	3	-11.84	-4.84	2.7	0.170	3.878	0.928	75
		QH	2	-6.43	-1.95	5.6	0.040	16.458	0.911	
		QA + QH	3	33.76	40.76	0.0	0.702	1	0.679	
	Cross Timbers	QA + QHD + (QA \times QHD)	4	35.62	45.36	4.6	0.070	10.000	0.660	80
		QHD	2	41.94	46.42	5.7	0.041	16.935	0.566	
		QA + QH + (QA \times QH)	4	8.47	18.21	0.0	0.470	1	0.954	
20		QH	2	14.03	18.51	0.3	0.406	1.158	0.943	
		QA + QH	3	14.04	21.04	2.8	0.114	4.115	0.943	

^ano. of estimable parameters, including the intercept.
^bAkaike's information criterion corrected for small sample size.
^c Δ AIC.
^dAkaike weight. 85

Ecoregions

30 The most plausible model for bobwhite harvest in the
 Rolling Plains included quail abundance and hunter-days,
 with and without the interaction term, although the model
 that incorporated quail abundance and total quail hunters
 also was plausible (Table 2). The best-supported models for
 35 bobwhite harvest in the High Plains, Gulf Coast Prairies and
 Cross Timbers incorporated quail abundance and total quail
 hunters, but the model including quail abundance and quail
 hunter-days also was plausible for the Gulf Coast Prairies,
 as in the Rolling Plains. Although bobwhite harvest in the
 40 Edwards Plateau and South Texas Plains was best accounted
 for by the model that considered only hunter-days, as
 in other regions, the next most plausible models for both
 regions included quail abundance.

Scaled quail harvest in the High Plains and Edwards
 45 Plateau was best accounted for by models that included quail
 abundance and total quail hunters (Table 3). In the Trans-
 Pecos, the most plausible model included quail abundance
 and quail hunter-days, but the model including only quail
 hunter-days also was plausible. The model that included
 50 only total quail hunters best explained scaled quail harvest
 in the Rolling and South Texas Plains, although models that
 considered quail abundance and total quail hunters also were
 plausible.

Discussion

We found that quail abundance and hunter effort (total hunt-
 60 er-days and total hunters) accounted for 96.9 and 91.5% of
 the variability in statewide bobwhite and scaled quail harvest

in Texas, respectively. In fact, all models that included both
 quail abundance and a measure of hunter effort accounted
 well for quail harvest ($R^2 \geq 0.871$; Table 1). These results
 are consistent with the self-regulatory explanation of quail
 harvest at the statewide scale (Peterson and Perez 2000), as
 all plausible models included quail abundance and reflected
 the influence of hunter effort – quail hunter-days, and to a
 95 lesser extent total quail hunters – on total bobwhite harvest,
 or the number of people hunting one or more days on total
 scaled quail harvest. The difference between the measure of
 hunter effort for the species may be the result of scaled quail
 hunters hunting the same number of days during a given
 100 hunting season, whereas some bobwhite hunters may hunt
 many more days than others due to factors such as expensive
 hunting rights leases (Conner 2007).

At the ecoregion scale, similar models were most plausible
 for bobwhites in the High Plains, Rolling Plains, Gulf Coast
 105 Prairies and Cross Timbers, and for scaled quail in the High
 Plains, Edwards Plateau and Trans-Pecos. In all these cases,
 quail abundance and a measure of hunter effort accounted
 for most ($\geq 67.9\%$) of the variation in quail harvest. Diver-
 110 gence occurred from statewide models in regions, such as
 the Trans-Pecos, where quail abundance and hunter-days
 best explained quail harvest, rather than total quail hunters.
 This is likely because scaled quail are not typically hunted
 coincidental to bobwhites in this region, as they are in oth-
 115 ers. Interestingly, hunter effort alone accounted for most
 ($\geq 82.6\%$) of the variation in quail harvest in some regions
 (i.e. South Texas Plains, Edwards Plateau for bobwhites;
 Rolling Plains and South Texas Plains for scaled quail). The
 lack of quail abundance in most plausible models for the
 Rolling and South Texas Plains may be due to lucrative quail
 121 fee-hunting operations that dominate quail harvest in these

0	Table 3. Set of plausible ($\Sigma W_i \geq 0.95$) candidate regression models using quail abundance (QA), total quail hunters (QH), and total quail hunter-days (QHD) to account for annual total harvest of scaled quail in five ecological regions of Texas from log-transformed harvest and abundance survey data from the years 1978 through 2012 using AICc model selection.									61
	Ecological region	Model	K^a	$-2\ln L$	AICc ^b	Δ_i^c	ω_i^d	ω_i/ω_1	R^2	
5	High Plains	QA + QH	3	31.32	39.04	0.0	0.800	1	0.796	65
		QA + QH + (QA \times QH)	4	31.84	42.91	3.9	0.115	6.953	0.797	
		QA + QHD	3	36.20	43.92	4.9	0.070	11.499	0.733	
	Rolling Plains	QH	2	36.66	41.20	0.0	0.562	1	0.826	
		QA + QH	3	35.11	42.25	1.1	0.332	1.694	0.790	
		QA + QH + (QA \times QH)	4	35.39	45.39	4.2	0.069	8.117	0.790	70
10	Edwards Plateau ^e	QA + QH	3	24.89	31.89	0.0	0.496	1	0.853	
		QH	2	28.84	33.31	1.4	0.243	2.040	0.835	
	South Texas Plains ^e	QH	2	-11.33	-6.85	0.0	0.671	1	0.960	
		QA + QH	3	-11.52	-4.52	2.3	0.209	3.207	0.960	
	Trans-Pecos ^e	QA + QHD	3	34.84	41.84	0.0	0.563	1	0.763	
15		QHD	2	39.47	43.95	2.1	0.195	2.880	0.718	75
	^a no. of estimable parameters, including the intercept.									
	^b Akaike's information criterion corrected for small sample size.									
	^c Δ AIC.									
	^d Akaike weight.									
20	^e we did not report 95% confidence sets for these regions because the model that included the interaction term increased the Δ AIC < 2 with a similar -2 log likelihood, which means this additional parameter provided no new information relative to the model without the interaction term (Burnham and Anderson 2002, p. 131).									80
25	regions. Although some hunters and lease managers voluntarily restrict hunting during times of low quail abundance (Howard 2007), lessees pay so much for hunting access that some may hunt regardless of abundance (Conner 2007). Further, if quail harvest is best explained by hunter effort alone, harvest may have achieved hyperstability. Thus, lower quail abundance would not necessarily regulate harvest, contrary to the self-regulatory explanation of quail harvest (Peterson and Perez 2000). Thus, those formulating hunting regulations should consider variability in quail abundance as well as specific measures of hunter effort.									85
30	Current statewide quail hunting regulations cannot address variability in either quail demographic parameters or most quail hunter behaviors that drive harvest in Texas. Thus, we concur with earlier studies that concluded minor changes in statewide hunting regulations are unlikely to reduce harvest (Peterson and Perez 2000, Peterson 2001, Guthery et al. 2004a, b). Regardless, some stakeholders continue to believe that minor reductions in daily bag limits (i.e. 1–2 birds lower) or season lengths (i.e. 1–2 weeks shorter) could halt or reverse declining quail abundance in Texas (Sasser 2012). Other researchers maintained that, although more draconian reductions in daily bag limits and/or season lengths probably would reduce statewide quail harvest when birds are abundant, they are much less likely to be effective when quail numbers are low (Peterson 2001, Guthery et al. 2004a). Possibly for these reasons, some stakeholders in Texas recently argued for more extreme changes to hunting regulations, such as a statewide closed season (Texas Parks and Wildlife Commission 2012).									90
35	way. For this reason, current bobwhite and scaled quail hunting regulations in Texas cannot limit hunter effort or annual harvest at the regional scale, much less the spatial scale relevant to quail and quail hunters (i.e. the pasture; Williams et al. 2004), even if minor adjustments are made to reflect fluctuations in abundance statewide and certain aspects of hunter effort that influence each species. Thus, overharvest on individual properties can produce localized extirpations that may accelerate broad scale declines in abundance or range extent for any metapopulation where emigration and immigration cannot easily occur, while still operating within statewide hunting regulations.									95
40	For Texas quails, a number of solutions may be effective to prevent localized overharvest, including spatially explicit hunting regulations already employed for similar galliform species characterized by declining abundance and range extent (Williams et al. 2004, California Dept of Fish and Wildlife 2013, South Dakota Dept of Game Fish and Parks 2014). These solutions could include marked reductions in statewide season lengths and bag limits (Peterson 2001), replacing daily bag limits with annual quotas (Andersen et al. 2014), regulating season lengths and bag limits at the ecoregion or finer scale (Williams et al. 2004), or even closing the quail hunting season statewide, except on individual properties (including cooperatives) that maintain habitat demonstrated to be suitable to support hunted subpopulations (Guthery et al. 2000), thereby effectively managing harvest at the pasture scale. Although regulation at ecoregion or county scales may be viable alternatives, under any regulatory option, aside from closing the season or issuing individual property hunting permits, localized overharvest can still occur on individual properties. This is large due to the large size of properties where quail are hunted (often ≥ 1000 ha; Wilkins et al. 2003) relative to the limited dispersal ability of the species (often ≤ 1 km from hatch location; Duck 1943, Baumgartner 1944, Madison 1998, Taylor et al. 1999, Liu et al. 2002, Townsend et al. 2003, Terhune et al. 2010). Therefore, the most effective way to prevent localized over-									100
45										105
50										110
55										115
60										121

0	harvest in a private-land state such as Texas ($\geq 97\%$ privately owned; Wilkins et al. 2009), lies with those who functionally manage harvest at the scale relevant to both quail and quail hunters: the individual hunting property manager. Thus, it is critical that regulations do not de-incentivize habitat management for Texas quails by restricting hunting opportunities that are economically valuable to landowners. Therefore, we recommend that regulatory agencies and other wildlife professionals promote awareness of the potential for and effects of localized overharvest, and help land managers develop strategies to avoid this potential consequence of hunting.	for assistance with data access. The Rolling Plains Quail Research Foundation, and the Texas A&M University System supported aspects of this project.	61
5			65
10	The implications of localized overharvest extend beyond Texas quails: vulnerability of species characterized by limited dispersal ability to extirpation from localized overharvest is of concern for conservationists worldwide. In North America, greater sage-grouse <i>Centrocercus urophasianus</i> and ruffed grouse <i>Bonasa umbellus</i> , thereby contributing to population decline (Small et al. 1991, Gibson 1998, Connelly et al. 2003). In Europe, Scotland banned all capercallie <i>Tetrao urogallus</i> hunting in 2001 in the face of rapidly changing landscapes (The Scottish Government 2001). Concern has been expressed for the brown hare <i>Lepus europaeus</i> in Denmark, as changing agricultural landscapes effectively isolated subpopulations (Jensen 2009). In South America, concern has been directed toward subsistence hunting of many Amazonian vertebrates exhibiting various levels of limited dispersal ability in increasingly fragmented landscapes (Peres 2001). Clearly, those seeking to conserve exploited species characterized by limited dispersal ability in fragmented habitats are beginning to address vulnerability to localized harvest.		
15			
20			
25			
30			
	Conclusions		
35	Given the potential biological and political ramifications of changes in hunting regulations, wildlife policy makers must ensure their perceptions of hunting regulations match regulations' ability to influence quail harvest. Our models that included both quail abundance and some measure of hunter effort explained nearly all variability in statewide bobwhite and scaled quail harvest among years in Texas, but the specific measure of hunter effort was different in some regions. Further, quail harvest in some regions was best predicted by hunter effort alone. Thus, most regulatory changes are unlikely influence quail abundance. Although adding large expanses of contiguous habitat would certainly be the best action to reverse declining abundance of such species, harvest management strategies must function at a scale relevant to the species and its hunters to avoid accelerating declines of these limited dispersal species through localized overharvest. For Texas quails, harvest management by individual property managers, not statewide hunting regulations, are the best way to avoid localized overharvest. Due to the long-term decline in bobwhite and scaled quail, there is a critical need for wildlife professionals and hunting property managers to engage in dialogue regarding the array of management strategies that could prevent localized overharvest.		
40			
45			
50			
55			
60	<i>Acknowledgements</i> – We thank J. Connelly, H. Pedersen and N. Silvy for their comments on earlier drafts of this manuscript, and M. Frisbie and J. Purvis of the Texas Parks and Wildlife Dept		
		References	
		Allen, D. L. 1954. Our wildlife legacy. – Funk and Wagnalls.	
		Andersen, O. et al. 2014. Preferred harvest principles and – regulations amongst willow ptarmigan hunters in Norway. – <i>Wildl. Biol.</i> 20: 285–290.	70
		Ayal, Y. and Baharav, D. 1983. Conservation and management plan for the mountain gazelle in Israel. – In: Beasom, S. L. and Roberson, S. F. (eds), <i>Game harvest management</i> . Caesar Kleberg Wildl. Res. Inst., pp. 269–278.	
		Baumgartner, F. M. 1944. Bobwhite quail populations on hunted vs protected areas. – <i>J. Wildl. Manage.</i> 8: 259–260.	75
		Brennan, L. A. 1991. How can we reverse the northern bobwhite population decline? – <i>Wildl. Soc. Bull.</i> 19: 544–555.	
		Bridges, A. S. et al. 2001. Differential influence of weather on regional quail abundance in Texas. – <i>J. Wildl. Manage.</i> 65: 10–18.	80
		Bridges, A. S. et al. 2002. Landscape-scale land-cover change and long-term abundance of scaled quail and northern bobwhite in Texas. – <i>Proc. Natl Quail Symp.</i> 5: 161–167.	
		Burnham, K. P. and Anderson, D. R. 2002. Model selection and multi-model inference: a practical information-theoretic approach, 2nd edn. – Springer.	85
		California Dept of Fish and Wildlife. 2013. Sage grouse permits. < www.dfg.ca.gov/licensing/uplandgame/sagegrouse/ >. – California Dept of Fish and Wildlife.	
		Connelly, J. W. et al. 2003. Response of greater sage-grouse <i>Centrocercus urophasianus</i> populations to different levels of exploitation in Idaho, USA. – <i>Wildl. Biol.</i> 9: 335–340.	90
		Conner, J. R. 2007. Economic aspects of Texas quails. – In: Brennan, L. A. (ed.), <i>Texas quails: ecology and management</i> . Texas A&M Univ. Press, pp. 313–326.	
		deCalesta, D. S. 1983. Influence of regulation on deer harvest. – In: Beasom, S. L. and Roberson, S. F. (eds), <i>Game harvest management</i> . Caesar Kleberg Wildl. Res. Inst., pp. 131–138.	95
		Duck, L. G. 1943. Seasonal movements of bobwhite quail in northwestern Oklahoma. – <i>J. Wildl. Manage.</i> 7: 365–368.	
		Erismann, B. E. et al. 2011. The illusion of plenty: hyperstability masks collapses in two recreational fisheries that target fish spawning aggregations. – <i>Can. J. Fish. Aquat. Sci.</i> 68: 1705–1716.	100
		Gibson, R. 1998. Effects of hunting on the population dynamics of two sage grouse populations in Mono County, California. – <i>Western sage and Colombian sharp-tailed grouse Workshop</i> 21.	
		Godfrey, E. 2012. Declining quail populations: some hunters think Oklahoma should close quail hunting season. < http://newsok.com/declining-quail-population-some-hunters-think-oklahoma-should-close-quail-hunting-season/ article/3708245 >. – NewsOK.com.	105
		Gould, F. W. 1969. Texas plants: a checklist and ecological summary. – <i>Texas Agric. Exp. Stn.</i> Texas A&M Univ. System.	110
		Guthery, F. S. et al. 2000. Viability of northern bobwhite populations. – <i>J. Wildl. Manage.</i> 64: 646–662.	
		Guthery, F. S. et al. 2004a. Effects of bag limits on bobwhite hunters and harvest. – <i>J. Wildl. Manage.</i> 68: 1095–1103.	
		Guthery, F. S. et al. 2004b. Multi-state analysis of fixed, liberal regulations in quail harvest management. – <i>J. Wildl. Manage.</i> 68: 1104–1113.	115
		Guthery, F. S. et al. 2005. Invited paper: information theory in wildlife science: critique and viewpoint. – <i>J. Wildl. Manage.</i> 69: 457–465.	
		Hernández, F. and Peterson, M. J. 2007. Northern bobwhite ecology and life history. – In: Brennan, L. A. (ed.), <i>Texas</i>	121

- 0 quails: ecology and management. Texas A&M Univ. Press, pp. 40–64.
- Hilborn, R. and Walters, C. J. 1992. Quantitative fisheries stock assessment: choice, dynamics and uncertainty/Book and Disk. – Springer Science and Business Media.
- 5 Howard, R. 2007. Operating a south Texas hunting camp. – In: Brennan, L. A. (ed.), Texas quails: ecology and management. Texas A&M Univ. Press, pp. 336–362.
- Jensen, T.-L. W. 2009. Identifying causes for the population decline of the brown hare (*Lepus europaeus*) in agricultural landscapes in Denmark. – PhD thesis, Aarhus Univ., Denmark.
- 10 Johnson, K. H. and Braun, C. E. 1999. Viability and conservation of an exploited sage grouse population. – *Conserv. Biol.* 13: 77–84.
- Leopold, A. 1931. Report on a game survey of the north central states. – Sporting Arms and Ammunition Manufacturers' Inst.
- 15 Leopold, A. 1933. Game management. – Charles Scribner's Sons.
- Liu, X. et al. 2002. Movement patterns of resident and relocated northern bobwhite in east Texas. – *Proc. Natl Quail Symp.* 5: 168–172.
- Lusk, J. J. et al. 2002. Relative abundance of bobwhites in relation to weather and land use. – *J. Wildl. Manage.* 66: 1040–1051.
- 20 Lusk, J. J. et al. 2007. Evidence for regionally synchronized cycles in Texas quail population dynamics. – *J. Wildl. Manage.* 71: 837–843.
- Madison, L. A. 1998. Influence of food plots on the over-winter survival, hunting vulnerability, and movement patterns of northern bobwhites with notes on the metabolizable energy of food plot grains. – PhD thesis, Kansas State Univ.
- 25 Marboutin, E. and Peroux, R. 1995. Survival pattern of european hare in a decreasing population. – *J. Appl. Ecol.* 32: 809–816.
- 30 Merola-Zwartjes, M. 2005. Birds of southwestern grasslands: status, conservation and management. – In: Finch, D. M. (ed.), Assessment of grassland ecosystem conditions in the southwestern United States: wildlife and fish. US Dept Agric. For. Service, Rocky Mountain Res. Stn, pp. 71–140.
- 35 Miller, S. D. 1990. Population management of bears in North America. – *Bears Biol. Manage.* 8: 357–373.
- Neter, J. et al. 1996. Applied linear statistical models. Vol. 4. – Irwin Chicago.
- Peres, C. A. 2001. Synergistic effects of subsistence hunting and habitat fragmentation on amazonian forest vertebrates. – *Conserv. Biol.* 15: 1490–1505.
- 40 Peterson, M. J. 2001. Northern bobwhite and scaled quail abundance and hunting regulation: a Texas example. – *J. Wildl. Manage.* 65: 828–837.
- Peterson, M. J. and Perez, R. M. 2000. Is quail hunting self regulatory? Northern bobwhite and scaled quail abundance and quail hunting in Texas. – *Proc. Natl Quail Symp.* 4: 85–91.
- 45 Peterson, M. J. et al. 2002. Rangewide trends in landuse and northern bobwhite abundance: an exploratory analysis. – *Proc. Natl Quail Symp.* 5: 35–44.
- 50 Purvis, J. 2012. Small game harvest surveys and results 1992–2012. Federal Aid in Wildlife Restoration Performance Report W700-719a. – Texas Parks Wildl. Dept.
- Roseberry, J. L. 1991. Comparative effects of exploitation on semi-isolated and contiguous bobwhite populations. Report W-98-R(SI). – Cooperative Wildl. Res. Lab., SIUC.
- Roseberry, J. L. and Klimstra, W. D. 1984. Population ecology of the bobwhite. – Southern Illinois Univ. Press.
- 65 Roseberry, J. L. et al. 1979. Dynamics of an unexploited bobwhite population in deteriorating habitat. – *J. Wildl. Manage.* 43: 306–315.
- Rosene, W. 1969. The bobwhite quail, its life and management. – Rutgers Univ. Press.
- SAS Institute 2013. JMP Pro vers 11.0.0. – SAS Inst.
- 70 Sasser, R. 2012. Sasser: solving quail crisis goes beyond regulations. <www.dallasnews.com/sports/more-sports/outdoors/20120426-sasser-solving-quail-crisis-goes-beyond-regulations.ece>. – Dallas Morning News.
- Sauer, J. R. et al. 2012. The North American Breeding Bird Survey, results and analysis 1966–2011. – USGS Patuxent Wildl. Res. Center.
- 75 Silvy, N. J. and Hagen, C. A. 2004. Introduction: management of imperiled prairie grouse species and their habitat. – *Wildl. Soc. Bull.* 32: 2–5.
- Silvy, N. J. et al. 2007. Scaled quail ecology and life history. – In: Brennan, L. A. (ed.), Texas quails: ecology and management. Texas A&M Univ. Press, pp. 65–88.
- 80 Simms, R. 2012. There is confusion over quail hunting in Tennessee. <www.nooga.com/155642/there-is-confusion-over-quail-hunting-in-tennessee/>. – Nooga.com.
- Small, R. J. et al. 1991. Predation and hunting mortality of ruffed grouse in central Wisconsin. – *J. Wildl. Manage.* 55: 512–520.
- 85 South Dakota Dept of Game Fish and Parks. 2014. Sage-grouse management plan for South Dakota 2014–2018. – S. Dakota Dept Game Fish Parks.
- Taylor, J. S. et al. 1999. Macrohabitat effects on summer survival, movements, and clutch success of northern bobwhite in Kansas. – *J. Wildl. Manage.* 63: 675–685.
- 90 Terhune, T. M. et al. 2010. Translocation to a fragmented landscape: survival, movement, and site fidelity of northern bobwhites. – *Ecol. Appl.* 20: 1040–1052.
- Texas Parks and Wildlife Commission 2012. Committee meetings, May 23, 2012. – Texas Parks Wildl. Dept.
- 95 The Scottish Government 2001. Hunting ban on capercallie. <www.scotland.gov.uk/News/Releases/2001/11/522>. – The Scottish Government.
- Townsend, D. E. et al. 2003. Fitness costs and benefits associated with dispersal in northern bobwhites (*Colinus virginianus*). – *Am. Midl. Nat.* 150: 73–82.
- 100 Ward, H. G. et al. 2013. Corrigendum: A mechanistic understanding of hyperstability in catch per unit effort and density-dependent catchability in a multistock recreational fishery. – *Can. J. Fish. Aquat. Sci.* 70: 1858.
- 105 Wilkins, N. et al. 2003. Texas rural lands: trends and conservation implications for the 21st century. – Texas Cooperative Extension Service. Texas A&M Univ., College Station, TX.
- Wilkins, R. N. et al. 2009. Texas land trends. – Texas A&M Inst. Renewable Nat. Resour.
- Williams, C. K. et al. 2004. The northern bobwhite decline: scaling our management for the twenty-first century. – *Wildl. Soc. Bull.* 32:861–869.
- 110 Zar, J. H. 2010. Biostatistical analysis, 5th edn. – Prentice-Hall.

115

60

121